



McMaster Divinity College
Course Syllabus
Fall 2021

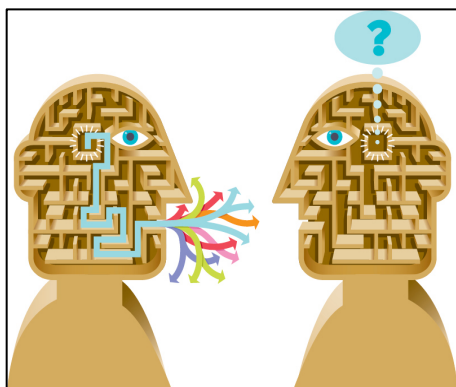
NT 1B03 – Introduction to Biblical Greek (Greek I)
Wed 1:00–2:50pm

Online: Sept–Dec 2021
Synchronous Meetings:
Wednesday 1:00–2:50pm

Instructor: Francis G. H. Pang, PhD
pangfg@mcmaster.ca
 Office Hours: By appointment

Co-Lecturer: Nathan Nadeau, MTS
nadeaun@mcmaster.ca

COURSE DESCRIPTION



People like to talk about what the Bible means, sometimes even with reference to “the original Greek.” However, for readers and teachers of the Bible to access useful resources and make insightful observations about the meaning of a text without making regrettable errors, they need to understand how languages make meaning—and how Greek makes meaning. This course explores the world of human language: language theory and how it applies to understanding texts. It will also review basic English grammar—which many students were never taught—as a basis for understanding Greek grammar. This will enable students to be better prepared to

engage with our main task: learning the basics of Greek, focusing on how the linguistic elements lead to meaningful and accurate interpretation. There will necessarily be some memorization of vocabulary and main paradigms, but this course will also significantly reduce the amount of memorization usually required in language learning, since the focus is on understanding and application. **Specializations:** (BS/PS) Biblical Studies, Pastoral Studies.

This course will appeal to two types of students:

1. Those who want to begin the process of learning biblical languages, especially those who plan on doing more advanced learning. Subsequent courses will teach the intelligent use of Greek resources as well as a more detailed knowledge of the languages and application to the biblical text.
2. Those who do not plan to study biblical languages in depth (or those who are not sure whether they do) but want to understand how languages work, how to move from one language to another, and how to interpret the biblical text responsibly. Those who want to continue with deeper study may do so.

MODE OF DELIVERY

Synchronous learning is online or distance education that happens in real time, whereas **asynchronous** learning occurs through online channels without real-time interaction. This course will include a blend of both asynchronous and synchronous online learning. Most of the course content are delivered asynchronously. Video lectures/tutorials will be made available each week on Wednesday. Weekly online synchronous classes will be held at scheduled class time (Wed 1:00-2:50 pm). Students must have a basic familiarity with computers to participate, including the ability to navigate Avenue to Learn (A2L) course site, participate in synchronous sessions using Zoom, and make and upload PDFs of assignments to A2L.

This course will be conducted as a “flipped classroom.” There are three main components to the course (“Mangled Language,” “Language Theory,” and “Practical Language”). Students will view the video lectures, study the handouts, and then complete exercises before class. The weekly online classroom time (via Zoom) will be dedicated to answering questions, clarifying concepts, consolidating learning, discussing interpretation, and practicing skills. We will go through our weekly routine on the first day of class.

Since this is an online course and, especially in this difficult time when we are dealing with a pandemic, all tests and exams will be proctored remotely using Zoom or similar video conferencing application such as WebEx or Microsoft Teams. Detailed instructions will be given on A2L and in class. Students are also encouraged to meet with the instructor (by appointment through Zoom) to discuss any questions raised in the forum and/or the assignments. Students should expect to commit at least 4-5 hours per week on the course.

LEARNING OUTCOMES



Knowing

- To know the major grammatical categories in English and Greek
- To understand how language makes meaning
- To understand the functions of language such as the interpersonal, experiential, and textual
- To recognize and understand key biblical vocabulary in Greek
- To begin to learn the grammatical forms/paradigms in Greek



Being

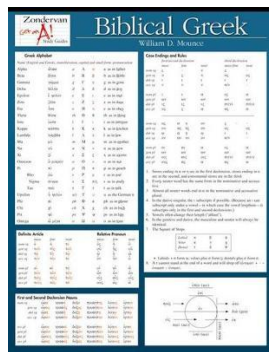
- “To present yourself to God as one approved, a worker who does not need to be ashamed and who correctly handles the word of truth.” (2 Tim 2:15)
- To be a mature interpreter of Scripture as taught by the Spirit (1 Cor 2:6–16)
- To allow the Scripture to motivate, form, and transform our faith, worship, and Christian way of life



Doing

- To describe how choices in language affect the meaning of the biblical text
- To describe the functions of the basic grammatical forms in Greek and use them in interpretation
- To begin to read and translate Greek texts
- To interpret the biblical text meaningfully without committing common mistakes

TEXTBOOK AND MATERIALS



1. Greek Summary:
Mounce, William D. *Biblical Greek Laminated Sheet*. Zondervan Get an A! Study Guides. Grand Rapids, MI: Zondervan, 2005.
2. Reference Grammar:
Porter, Stanley E., Jeffrey T. Reed, and Matthew Brook O'Donnell. *Fundamentals of New Testament Greek*. Grand Rapids, MI: Eerdmans, 2010.
3. Online Greek Resource:
Tyndale House: Scripture Tools for Every Person (STEP): available free from stepbible.org. Supplemental handouts will also be provided.
4. Video Lectures (required)
A series of video lectures has been prepared by the professor specifically for this course, focusing on common linguistic fallacies, language theory, and biblical interpretation. They also review and expand textbook concepts. They are available on A2L.
5. Greek Material (required)
Greek material (video lectures, tutorials, practice exercises, handouts, etc.) will be posted on Avenue to Learn (A2L) weekly.

2ND DECLENSION NOUN ENDINGS

| | | Masc./Fem. | Neuter |
|----------|------|------------|--------|
| SINGULAR | Nom. | -ος | -ον |
| | Gen. | -ου | -ου |
| | Dat. | -ῳ | -ῳ |
| | Acc. | -ον | -ον |
| PLURAL | Nom. | -οι | -α |
| | Gen. | -ων | -ων |
| | Dat. | -οις | -οις |
| | Acc. | -ους | -α |

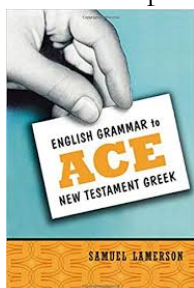


6. Vocabulary and Online Resources (keyed to the text):

A number of vocabulary and supplemental resources are given on A2L. A Quizlet (free online flashcard program) group will be created with study sets for student to memorize and review key paradigms and common vocabularies. Class invitation link to the Quizlet study set will be posted on A2L.

7. Suggested Resources:

This is a helpful resource for Greek students unfamiliar with English grammar:



Lamerson, Samuel. *English Grammar to Ace New Testament Greek*. Grand Rapids, MI: Zondervan, 2004.

And this is an excellent resource for doing appropriate word studies:

Baxter, Benjamin J. *“In the Original Text It Says”: Word-Study Fallacies and How to Avoid Them*. Critical Christian Issues. Gonzalez, FL: Energion, 2012.

Textbook Purchase: All required textbooks for this class are available from the College’s book service, READ On Bookstore, Room 145, McMaster Divinity College. Texts may be purchased on the first day of class.¹ For advance purchase, you may contact READ On Bookstore, 5 International Blvd, Etobicoke, Ontario M9W 6H3; phone 416.620.2934; fax 416.622.2308; email books@readon.ca. Other book services may also carry the texts.

COURSE REQUIREMENTS

All assignments must be submitted to the appropriate Assignment Box on A2L in **PDF format** only.

Bonus Activity: Mangled Language Discussions (up to 5% bonus)

Each week a question will be posted in a discussion on A2L. It will deal with a “questionable” interpretation of a biblical text involving the use of language. Students who read and respond with a thoughtful comment to these will earn up to a 5% bonus mark in the course. These will be expanded on in class in the following week.

Practical Language Assignment: Weekly Exercises 30% (Due on October 3, October 24, November 12, December 8 at 11:59 pm) – Indicated on the schedule below.

Students will complete weekly exercises provided by the instructors that involve the use of material covered in the weekly Greek videos and tutorials. The online sessions will focus in part on discussing and answering questions about these exercises to help you learn. We will work through examples together. These exercises will be collected and graded on four different dates. More details will be posted on A2L.

Language Theory Assignment: Sermon or Commentary Analysis 20%. Due on Monday, Nov 29 by 11:59 pm (marked on the schedule with ******)

¹ Note: The store at the College may be closed under COVID restrictions. You may email the main store ahead of time and materials will be sent to you.

Evaluate and critique a sermon, article, or an excerpt of a commentary (which will be provided by the instructors) in terms of the handling of the original Greek language. Students should utilize what they learn in class and identify the common exegetical and linguistic fallacies (which will be covered in language theory lectures). The entire report should be around **8 pages** and must follow the “McMaster Divinity College Style Guidelines for Essays and Theses.” Details will be provided on A2L.

Weekly Vocabulary Quizzes: 10%

You will be responsible for learning roughly 150-200 most common words in the Greek New Testament as well as the most common paradigms (the article, verb endings, etc.). You will be required to give an English gloss for each. The vocabulary and the most common paradigms will be quizzed WEEKLY on A2L.

Term Test: 20% (Week of November 1-5)

There will be a term test during the week of Nov 1. This will be conducted with either a proctoring software (Respondus LockDown Browser), or a live video (Zoom) meeting with the students and the proctor (the instructors). More information will be given in class.

Final Exam 20%. Due by Friday, December 10

There will be a final exam during the week of Dec 6. Like the term test, the final exam will be conducted with proctoring software or a live video meeting. More information will be given in class.

| | |
|---|------|
| Practical Language Assignment: Weekly Exercises | 30% |
| Language Theory Assignment: Sermon or Commentary Analysis | 20% |
| Vocabulary Quizzes | 10% |
| Term Test | 20% |
| Final Exam | 20% |
| Total Grade | 100% |

COURSE SCHEDULE

| | Week of | Mangled Language (ML)² | Language Theory | Practical Language | Greek Tutorial (Zoom Meetings) |
|---|----------------|--|---|---|---------------------------------------|
| 1 | Sep 13 | — | Introduction and Syllabus | Alphabet, Vowels, Pronunciation: Names, Forms, Sounds. | Alphabet |
| 2 | Sep 20 | ML 1: Loving God | Theory 1: Functions of Language | Auxiliary System: Particles, Conjunctions, and Prepositions | Pronunciation and Vowels |

² These are short (15–20 min) videos dealing with misinterpretations. An opportunity for bonus marks.

| | | | | | |
|----|--|---|--|---|--------------------------------|
| 3 | Sep 27 Exercise Due Oct 3 | ML 2: Kinds of Love | Theory 2: Form and Function; Syntax and Semantics | Nominal Systems 1: Case, gender, number | The Greek Article |
| 4 | Oct 4 | — | — | Nominal Systems 2: Noun and pronouns | 1 and 2 Declension Nouns |
| 5 | Oct 11 Thanksgiving Oct 11 | ML 3: Righteousness of God | Theory 3: Words and Theology | Nominal Systems 3: Nominal Group | Greek Adjectives |
| 6 | Oct 18 Exercise Due Oct 24 | ML 4: Divine Necessity? | Theory 4: How to do word study? | Introduction to Verb | Infinitives |
| 7 | Oct 25 | — | — | Verbal Systems 1: Finite and Non-finite | Primary Active endings |
| 8 | Nov 1 Term Test Nov 5 | Test Review | | | |
| 9 | Nov 8 Exercise Due Nov 12 | ML 5: TBD | Theory 5: Exegetical Fallacies 1 | Verbal Systems 2: Voice | Primary M/P endings |
| 10 | Nov 15 | ML 6: TBD | Theory 6: Exegetical Fallacies 2 | Verbal Systems 3: Tense and Aspect | Secondary Active endings |
| 11 | Nov 22 | ML 7: Stay-at-home Dad? | Theory 7: Meaning, Choice, and Ranks | Verbal Systems 4: Mood | Secondary M/P endings |
| 12 | Nov 29** LT Paper Due | ML 8: Mirror Reading | Theory 8: Punctuation and Interpretation | Verbal Systems 5: | Participles |
| 13 | Dec 6 Exercise Due Dec 8 Exam: Dec 10 | Exam Review | | | |

CLASSROOM BEHAVIOR, ATTENDANCE, AND PARTICIPATION

- All thoughtful student participation is welcome. There are no “dumb questions” or “stupid answers.” Students will respect the contributions of other students, although they may disagree, and respond to them without ridicule or scorn.
- Students are expected to attend all online classes. Missing a class in order to work on other assignments is a consequence of poor planning and is unacceptable. If you are genuinely ill or there is a serious emergency, your absence is acceptable. Please email the professors to explain.
- Students are expected to be on time for class. Admittedly, unavoidable delays do occasionally happen. If you arrive late, please email an explanation to the professors after class.
- Students are also expected to stay for the entire class session.

LATE SUBMISSION POLICY

All assignments must be submitted on or before the due date, unless other arrangements are made in advance. A late penalty of 2% per day will be applied to all assignments submitted after the deadline, unless an extension has been obtained from the instructor prior to the deadline. Assignments cannot be submitted after **Dec 10, 2021** without written permission from the Office of the Registrar (strickpd@mcmaster.ca).

ACADEMIC HONESTY

Academic dishonesty is a serious offence that may take any number of forms, including plagiarism, the submission of work that is not one's own or for which previous credit has been obtained, and/or unauthorized collaboration with other students. Academic dishonesty can result in severe consequences, e.g., failure of the assignment, failure of the course, a notation on one's academic transcript, and/or suspension or expulsion from the College. Students are responsible for understanding what constitutes academic dishonesty. Please refer to the Divinity College Statement on Academic Honesty ~ <https://www.mcmasterdivinity.ca/programs/rules-regulations>.

In this course we will be using a web-based service ([turnitin.com](https://www.turnitin.com)) for plagiarism detection. Students who do not wish to submit their work to [turnitin.com](https://www.turnitin.com) can submit an electronic copy of their work via email in PDF format and no penalty will be assigned, but all submitted work is subject to normal verification standards in order to ensure that academic integrity has been upheld (e.g. online search).

GENDER INCLUSIVE LANGUAGE

McMaster Divinity College uses inclusive language for human beings in worship services, student written materials, and all of its publications. It is expected that inclusive language will be used in chapel services and all MDC assignments. In reference to biblical texts, the integrity of the original expressions and the names of God should be respected, but you will need to use gender-inclusive language for humans, and you will need to quote from a gender-inclusive version such as the following: NRSV (1989), NCV (1991), TEV/GNB/GNT (1992), CEV (1995), NLT (1996), TNIV (2005), and the Common English Bible (CEB 2011).

STYLE

All stylistic considerations (including but not limited to questions of formatting, footnotes, and bibliographic references) must conform to the McMaster Divinity College Style Guidelines for Essays and Theses <https://mcmasterdivinity.ca/resources-forms/mdc-style-guide/>. Failure to observe appropriate form will result in grade reductions.

DISCLAIMER

This syllabus is the property of the instructor and is prepared with currently available information. The instructor reserves the right to make changes and revisions up to and including the first day of class.