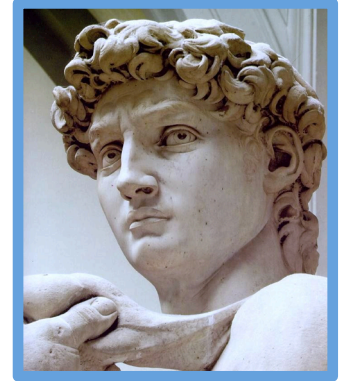




McMaster Divinity College



OT 3XS3 *SAMUEL*

Tuesdays 1:30pm – 3:20pm

Professor: Dr. Paul S. Evans
Phone: (905) 525-9140 Ext. 24718
E-mail: pevans@mcmaster.ca
Office: 236

Course Description:

This course will provide a close reading of the biblical books of 1-2 Samuel, exploring important historical, literary and theological issues raised by the text. We will investigate what the proper role of the monarchy was in Israel's history; why Saul was rejected as king; whether Samuel was an unbiased prophet; the nature of Saul's failure as king, and what qualities of David set him apart as a king. Sustained attention will be paid to the rise of David from young shepherd boy, to Israel's hero and king, and his latter decline as sin, family crises and other tragic events threatened to depose him later in life. The key role of David in salvation history will also be explored with a biblical theological exploration of the "son of David" in messianic expectation. This course will consider the nature of the biblical narrative and its theological importance in both its ancient context and for the modern church today.

Specializations: Biblical Studies and Pastoral Studies

Doctor of Practical Theology students who wish to apply for this course as an Advanced Elective for their degree program must consult with the Program Director of the DPT and the course instructor in order to develop an Advanced Elective approach to the course that fulfills the specific elements required by the DPT program. Once the elements of the Advanced Elective have been agreed upon by the student, the Program Director, and the instructor, a formal application can be made for an Advanced Elective in connection with this course. Once the application is accepted, DPT students can proceed with the course as part of their degree program.

Course Objectives:

Knowing

- To gain in-depth knowledge of the contents and message of the books of Samuel
- To gain familiarity with the assumptions, methods and conclusions of modern critical scholarship on the Old Testament

Being

- To embrace the contemporary relevance of these biblical books for the Church today
- To grow closer to God through study of his Word

Doing

- To be able to interpret Samuel in its original contexts
- To be able to apply the message of Samuel to contemporary audiences

Required Textbooks:

- V. Philips Long, *The Art of Biblical History*, vol. 5 in Foundations of Contemporary Interpretation (Grand Rapids: Zondervan, 1994).
- Walter Brueggemann. *First and Second Samuel*. Interpretation, a Bible Commentary for Teaching and Preaching. Louisville, Ky.: John Knox Press, 1990.

Textbook Purchase:

All required textbooks for this class are available from the College's book service, READ On Bookstore, Room 145, McMaster Divinity College. Texts may be purchased on the first day of class. For advance purchase, you may contact READ On Bookstores, 304 The East Mall, Suite 100, Etobicoke, ON M9C 5K1: phone 416-620-2934; fax 416-622-2308; e-mail books@readon.ca. Other book services may also carry the texts.

Course Evaluation

The assignments and their weights are as follows:

10% - Readings Due date December 6, 2016 ***no extensions***.

Each student is to read the biblical books of 1-2 Samuel as well as the textbooks in their entirety. Each student must send an email stating to what extent they have completed their readings by the due date.

20% - (10% each) Chapter Reviews of *The Art of Biblical History*.

Students must abstract and critically review chapters 2 and 3 of this textbook.

Each paper must be **no more than 2 pages** double-spaced. The papers should summarize the contents of the chapter and give critical interaction and evaluation of the chapter. See "Review Guidelines" below.

Chapter 2 Review due date September 27, 2016 ***no extensions***.

Chapter 3 Review due date October 7, 2016 ***no extensions***.

30% - Character Study: 8-10 pages Due date November 1 ***no extensions***

After reading handouts and articles on characterization in biblical narratives students will write a paper on the characterization of their chosen biblical character.

Possible topics: Samuel, Saul, David, Michal, Abigail, Bathsheba, Joab, Absalom, Jonadab, Ahithophel. *Choice of another biblical character must be approved by your professor*

40% - Major Assignment Due date November 29, 2016 ***no extensions***.**A. Major Assignments for Biblical Studies Specializations:**

There are two (2) options for Biblical Studies: Choose only one (1) of the following:

- 1. Research Paper: 12 pages** This is especially recommended if you are planning to go on to a research degree or write a thesis in OT (or if you have a particular topic in mind that you wish to write on). The topic of this research must be related to Samuel and approved by the professor.
- 2. Exegetical Paper: 12 pages** Students will write an exegetical paper on a chosen text from the book of Samuel (your chosen text must be approved by your professor).

All Papers must be double-spaced, 12pt Times New Roman font (footnotes should be 10pt Times New Roman font and single spaced). The bibliography must contain 12 items of secondary sources (commentaries, theological dictionaries, monographs and at least 3 academic articles). Each item must be drawn on and cited in the paper. Students may supplement these 12 sources with 2 internet resources. See "Paper Evaluation" below.

B. Major Assignments for Pastoral Specializations:

There are three (3) options for Biblical Studies: Choose only one (1) of the following:

- 1. Exegetical Paper: 12 pages** Students will write an exegetical paper on a chosen text from the book of Samuel (your chosen text must be approved by your professor).

Paper must be double-spaced, 12pt Times New Roman font (footnotes should be 10pt Times New Roman font). The bibliography must contain 12 items of secondary sources (commentaries, theological dictionaries, monographs and at least 3 academic articles). Each item must be drawn on and cited in the paper. Students may supplement these 12 sources with 2 internet resources. See "Paper Evaluation" below.

- 2. Sermon on a passage from Samuel (oral presentation).** 20-25 minute video-taped sermon submitted on CD/DVD/USB drive. Beginning with the text of Samuel this sermon will expound a passage, applying it to the contemporary context. The sermon will be delivered orally but include a written paper with an outline. The paper may be a combination of sentence, bullets/point form, paragraphs (it need not be a complete essay of the words you preach). This paper should be grammatically correct and include

appropriate citation of sources employed.

3. Sermon on a passage from Samuel (written). 10 pages double-spaced. Beginning with the text of Samuel this sermon will expound a passage, applying it to the contemporary context. The sermon will be an original written composition but written with an aim to oral delivery. The submitted text should include an outline. The sermon must be written as it would be spoken and must *not* be in point form etc. but be a full written manuscript. It is expected it will conform to MDC style guide and be grammatically correct and acknowledge its sources appropriately (using Endnotes—not footnotes).

College Style for Submission of Written Work

All stylistic considerations (including but not limited to questions of formatting, footnotes, and bibliographic references) must conform to the McMaster Divinity College Style Guidelines for Essays and Theses

All papers to be submitted in electronic format only (a pdf file)—no hardcopies! Email to pevans@mcmaster.ca. Include your last name in the file name of your attachment (e.g., evans.researchpaper.pdf). To avoid late marks papers must be received before the end of the calendar day on which they are due (i.e., before midnight Eastern Standard Time).

Policy Concerning Late Papers

Extensions for papers will not be given except in very exceptional circumstances. (serious illness, family crises, etc.). Busy-ness, computer problems etc. are not legitimate reasons to grant extensions and in the interests of fairness any request for extensions will take into account the entire class. Late assignments will be docked at the rate of 2% per day for the first 7 days (including weekends) and 4% per day after that. All assignments must be received by the last day of class (Dec 6) in order to avoid a failing grade in the class. Late assignments receive no critical feedback.

Academic Honesty:

Academic dishonesty is a serious offence that may take any number of forms, including plagiarism, the submission of work that is not one's own or for which previous credit has been obtained, and/or unauthorized collaboration with other students. Academic dishonesty can result in severe consequences, e.g., failure of the assignment, failure of the course, a notation on one's academic transcript, and/or suspension or expulsion from the College. Students are responsible for understanding what constitutes academic dishonesty. Please refer to the Divinity College Statement on Academic Honesty ~ <http://www.mcmasterdivinity.ca/programs/rules-regulations>

Gender Inclusive Language:

McMaster Divinity College uses inclusive language for human beings in worship services, student written materials, and all of its publications. In reference to biblical texts, the integrity of the original expressions and the names of God should be respected. The NRSV and TNIV are examples of the use of inclusive language for human beings. It is expected that inclusive language will be used in chapel services and all MDC assignments.

Disclaimer

This syllabus is the property of the instructor and is prepared with currently available information. The instructor reserves the right to make changes and revisions up to and including the first day of class.

Students are advised to retain this syllabus for their records.

PAPER EVALUATION

I. The following items are rated according to this scale: 1 = inadequate; 2 = adequate; 3 = good; 4 = very good; 5 = superior.

Bibliographic consciousness	1	2	3	4	5
Range and Use of Sources	1	2	3	4	5
Clarity in Defining Issues	1	2	3	4	5
Strength of Argument	1	2	3	4	5
Awareness of Exegetical Issues	1	2	3	4	5
Accuracy of Data and Assertions	1	2	3	4	5
Analysis /Critical Thinking	1	2	3	4	5
Introduction (Thesis Statement /Clear Issue)	1	2	3	4	5
Development of Thesis (focus)	1	2	3	4	5
Literary Style (awkward, wordy, repetitive)	1	2	3	4	5
Organization/coherence of ideas	1	2	3	4	5
Grammar/Spelling	1	2	3	4	5
Neatness/Presentation	1	2	3	4	5

§ Note: this is a simple evaluation tool to assist in paper assessment. The categories are not weighted equally, and thus are not added together or averaged to calculate your grade.

II. The following need attention if so indicated

- | | |
|---|--|
| <input type="checkbox"/> Use inclusive language | <input type="checkbox"/> The paper is too long/too short |
| <input type="checkbox"/> Write a unified essay | <input type="checkbox"/> Edit your paper more thoroughly |
| <input type="checkbox"/> Line spacing, Font size, Margins, Page numbers etc. need attention | <input type="checkbox"/> The paper needs balance |
| <input type="checkbox"/> Cite primary resources correctly/consistently (e.g., Gen 1:26; Genesis 1; etc) | <input type="checkbox"/> Cite secondary resources correctly/consistently |

III. Comments

CHAPTER REVIEW GUIDELINES

I. The Reviews of chapters 2 and 3 of V. Phillips Long. *The Art of Biblical History* should roughly follow this format:

Summary of Content: ½ - 1 Page

Critique of Content ½ - 1 Page

Personal Reflection ½ - 1 Page

Total=*no more* than 2 pages per review! Pages 3ff *will not* be read

The following items are rated according to the following scale:

1 = poor/inadequate; 2 = adequate; 3 = good/more than adequate; 4 = very good;
5 = excellent/superior.

Summary of Content (noted key concepts etc.)	1 2 3 4 5
Quality of Critique (evidence of critical thought)	1 2 3 4 5
Reflective Thought (theological depth, sensitivity)	1 2 3 4 5
Literary Style (awkward, wordy, repetitive)	1 2 3 4 5
Grammar/Spelling	1 2 3 4 5
Neatness/Presentation	1 2 3 4 5

§ Note: this is a simple evaluation tool to assist in paper assessment. The categories are not weighted equally, and thus are not added together or averaged to calculate your grade.

II. The following need attention if checked

- | | |
|--|--|
| <input type="checkbox"/> Use inclusive language
<input type="checkbox"/> Write a unified review
<input type="checkbox"/> Line spacing, Font size, Margins, Page numbers etc. need attention
<input type="checkbox"/> Cite primary resources correctly/consistently (e.g., Gen 1:26; Genesis 1; etc) | <input type="checkbox"/> The paper is too long/too short
<input type="checkbox"/> Edit your paper more thoroughly
<input type="checkbox"/> The paper needs balance

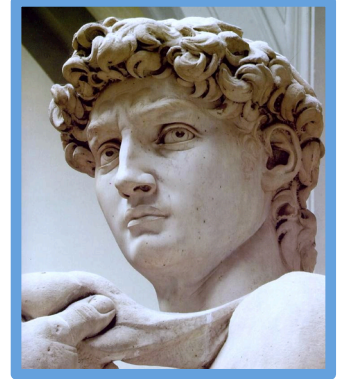
<input type="checkbox"/> Cite secondary resources correctly/consistently |
|--|--|

III. Comments



McMaster Divinity College

OT 6XS6 *SAMUEL*



Tuesdays 1:30pm – 3:20pm

Professor: Dr. Paul S. Evans
Phone: (905) 525-9140 Ext. 24718
E-mail: pevans@mcmaster.ca
Office: 236

Course Description:

This course will provide a close reading of the biblical books of 1-2 Samuel, exploring important historical, literary and theological issues raised by the text. We will investigate what the proper role of the monarchy was in Israel's history; why Saul was rejected as king; whether Samuel was an unbiased prophet; the nature of Saul's failure as king, and what qualities of David set him apart as a king. Sustained attention will be paid to the rise of David from young shepherd boy, to Israel's hero and king, and his latter decline as sin, family crises and other tragic events threatened to depose him later in life. The key role of David in salvation history will also be explored with a biblical theological exploration of the "son of David" in messianic expectation. This course will consider the nature of the biblical narrative and its theological importance in both its ancient context and for the modern church today.

Course Objectives:

Knowing

- To gain in-depth knowledge of the contents and message of the books of Samuel
- To gain familiarity with the assumptions, methods and conclusions of modern critical scholarship on the Old Testament

Being

- To embrace the contemporary relevance of these biblical books for the Church today
- To grow closer to God through study of his Word

Doing

- To be able to interpret Samuel in its original contexts
- To be able to apply the message of Samuel to contemporary audiences

Required Textbooks:

- V. Philips Long, *The Art of Biblical History*, vol. 5 in Foundations of Contemporary Interpretation (Grand Rapids: Zondervan, 1994).
- Walter Brueggemann. *First and Second Samuel*. Interpretation, a Bible Commentary for Teaching and Preaching. Louisville, Ky.: John Knox Press, 1990.
- Robert Alter, *The David Story: A Translation with Commentary of 1 and 2 Samuel*. 1st ed. New York: W.W. Norton, 1999.

Textbook Purchase:

All required textbooks for this class are available from the College's book service, READ On Bookstore, Room 145, McMaster Divinity College. Texts may be purchased on the first day of class. For advance purchase, you may contact READ On Bookstores, 304 The East Mall, Suite 100, Etobicoke, ON M9C 5K1: phone 416-620-2934; fax 416-622-2308; e-mail books@readon.ca. Other book services may also carry the texts.

Course Evaluation

The assignments and their weights are as follows:

15% - Review of *The Art of Biblical History*. 6 pages. Due date October 7, 2016 *no extensions***.**

Students must write a critical review that will:

- Summarize the content
- Relate its content to current scholarly literature and debate
- Critically assess its arguments and positions

30% - Characterization Study: 15 pages. Due date November 1 *no extensions*****

Students will write a paper on the characterization of their chosen biblical character.

Possible topics: Samuel, Saul, David, Michal, Abigail, Bathsheba, Joab, Absalom, Jonadab, Ahithophel. *Choice of another biblical character must be approved by your professor*

40% - Major Paper: 20 pages Due date November 29, 2016 *no extensions***.**

Papers must be double-spaced, using 12pt Times New Roman font throughout (footnotes should be 10pt Times New Roman font). The bibliography must contain at least 20 items of varied secondary sources (commentaries, theological dictionaries, specialized books) including *at least* 3 articles from peer reviewed / refereed journals. *By way of supplement* to these 20 sources, a student may use a *maximum* of 2 internet resources. Students are responsible for the quality of the sources chosen. These secondary sources do not include primary sources. Each source listed must be drawn on in the paper and evidenced in the footnotes etc. *Research Topic must be approved by your professor.*

15% - Class Presentation. The contents of the research paper will be presented to class in the form of a half hour lecture. Though drawing on high-level academic work the presentation will be accessible for all students in the classroom. The

date of the lecture will be worked out with the professor.

College Style for Submission of Written Work

All stylistic considerations (including but not limited to questions of formatting, footnotes, and bibliographic references) must conform to the McMaster Divinity College Style Guidelines for Essays and Theses

All papers to be submitted in electronic format only (a pdf file)—no hardcopies! Email to pevans@mcmaster.ca. Include your last name in the file name of your attachment (e.g., evans.researchpaper.pdf). To avoid late marks papers must be received before the end of the calendar day on which they are due (i.e., before midnight Eastern Standard Time).

Policy Concerning Late Papers

Extensions for papers will not be given except in very exceptional circumstances. (serious illness, family crises, etc.). Busy-ness, computer problems etc. are not legitimate reasons to grant extensions and in the interests of fairness any request for extensions will take into account the entire class. Late assignments will be docked at the rate of 2% per day for the first 7 days (including weekends) and 4% per day after that. All assignments must be received by the last day of class (Dec 6) in order to avoid a failing grade in the class. Late assignments receive no critical feedback.

Academic Honesty:

Academic dishonesty is a serious offence that may take any number of forms, including plagiarism, the submission of work that is not one's own or for which previous credit has been obtained, and/or unauthorized collaboration with other students. Academic dishonesty can result in severe consequences, e.g., failure of the assignment, failure of the course, a notation on one's academic transcript, and/or suspension or expulsion from the College. Students are responsible for understanding what constitutes academic dishonesty. Please refer to the Divinity College Statement on Academic Honesty ~ <http://www.mcmasterdivinity.ca/programs/rules-regulations>

Gender Inclusive Language:

McMaster Divinity College uses inclusive language for human beings in worship services, student written materials, and all of its publications. In reference to biblical texts, the integrity of the original expressions and the names of God should be respected. The NRSV and TNIV are examples of the use of inclusive language for human beings. It is expected that inclusive language will be used in chapel services and all MDC assignments.

Disclaimer

This syllabus is the property of the instructor and is prepared with currently available information. The instructor reserves the right to make changes and revisions up to and including the first day of class.

Students are advised to retain this syllabus for their records.

PAPER EVALUATION

I. The following items are rated according to this scale: 1 = inadequate; 2 = adequate; 3 = good; 4 = very good; 5 = superior.

Bibliographic consciousness	1	2	3	4	5
Range and Use of Sources	1	2	3	4	5
Clarity in Defining Issues	1	2	3	4	5
Strength of Argument	1	2	3	4	5
Awareness of Exegetical Issues	1	2	3	4	5
Accuracy of Data and Assertions	1	2	3	4	5
Analysis /Critical Thinking	1	2	3	4	5
Introduction (Thesis Statement /Clear Issue)	1	2	3	4	5
Development of Thesis (focus)	1	2	3	4	5
Literary Style (awkward, wordy, repetitive)	1	2	3	4	5
Organization/coherence of ideas	1	2	3	4	5
Grammar/Spelling	1	2	3	4	5
Neatness/Presentation	1	2	3	4	5

§ Note: this is a simple evaluation tool to assist in paper assessment. The categories are not weighted equally, and thus are not added together or averaged to calculate your grade.

II. The following need attention if so indicated

- | | |
|---|--|
| <input type="checkbox"/> Use inclusive language | <input type="checkbox"/> The paper is too long/too short |
| <input type="checkbox"/> Write a unified essay | <input type="checkbox"/> Edit your paper more thoroughly |
| <input type="checkbox"/> Line spacing, Font size, Margins, Page numbers etc. need attention | <input type="checkbox"/> The paper needs balance |
| <input type="checkbox"/> Cite primary resources correctly/consistently (e.g., Gen 1:26; Genesis 1; etc) | <input type="checkbox"/> Cite secondary resources correctly/consistently |

III. Comments