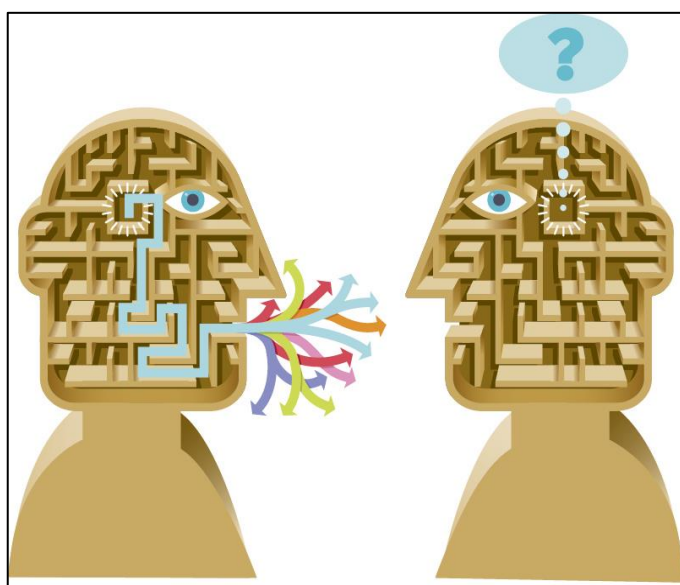




**MCMASTER DIVINITY COLLEGE
COURSE SYLLABUS
FALL 2019**

**INTRODUCTION TO HEBREW-/GREEK: GREEK 1/HEBREW 1
(NT 1B03 or OT 1B03)**



INSTRUCTORS:

Mary L. Conway, PhD
Divinity College Room 228
Phone: 1.905.525.9140 x26002
Email: conwam2@mcmaster.ca

Francis Pang, PhD
Divinity College Room 238
Phone: 1.905.525.9140 x21619
Email: pangfg@mcmaster.ca

Tuesdays, from 9:00 am–10:50 am

There will be a course web page on [Avenue to Learn](#) (A2L).

I. COURSE DESCRIPTION

People like to talk about what the Bible means, sometimes even with reference to “the original Hebrew” or “the original Greek.” However, for readers and teachers of the Bible to access useful resources and make insightful observations about the meaning of a text without making regrettable errors, they need to understand how languages make meaning—and how Hebrew and Greek make meaning. This course explores the world of human language in the common first half of the class: language theory and how it applies to understanding texts. Then students will divide into a Hebrew stream and a Greek stream that will review English grammar and introduce the basics of one of either Hebrew or Greek, focusing on how the linguistic elements lead to interpretation.

This course will appeal to two types of students:




1. Those who want to begin the process of learning biblical languages, especially those who plan on doing more advanced learning. Subsequent courses will teach the intelligent use of Greek/Hebrew resources as well as a more detailed knowledge of the languages.

2. Those who do not plan to study biblical languages in depth (or those who are not sure whether they do) but want to understand how languages work, how to move from one language to another, and how to interpret the biblical text responsibly. Some introductory grammar will be covered; those who want to continue with deeper study may do so.

OT/NT 1L03 MDiv/MTS Specializations: (BS/PS) Biblical Studies, Pastoral Studies (See http://www.mcmasterdivinity.ca/sites/default/files/documents/mdiv-mts_specializations_and_outcomes.pdf)

II. LEARNING OUTCOMES



- a.  Knowing
- To know the major grammatical categories in English, and Greek or Hebrew
 - To understand how language makes meaning(s)
 - To understand the functions of language such as the social, interpersonal, pragmatic, and propositional
 - To understand what constitutes a legitimate “word study” and avoid common errors
 - To recognize and understand key biblical vocabulary in Hebrew or Greek
 - To begin to learn the grammatical forms/paradigms in Hebrew or Greek
- b.  Being
- “To present yourself to God as one approved, a worker who does not need to be ashamed and who correctly handles the word of truth.” (2 Tim 2:15)
 - To be a mature and responsible interpreter of Scripture as taught by the Spirit (1 Cor 2:6–16)
 - To allow the Scripture to motivate, form, and transform our faith, worship, and Christian way of life
- c.  Doing
- To describe how choices in language affect the meaning of the biblical text
 - To describe the functions of the basic grammatical forms in Greek or Hebrew
 - To recognize and understand some of the basic paradigms in Greek or Hebrew
 - To begin to read Hebrew or Greek texts
 - To interpret the biblical text meaningfully without committing common mistakes

III. COURSE REQUIREMENTS

A. REQUIRED TEXTS AND RESOURCES (Students need only purchase the texts for their preferred language.)

Required Hebrew Texts:

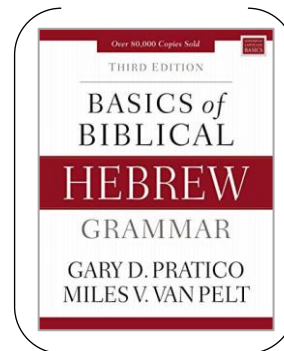
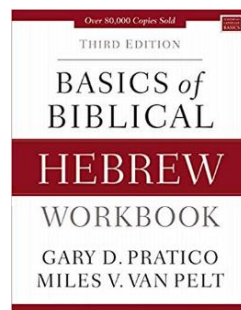
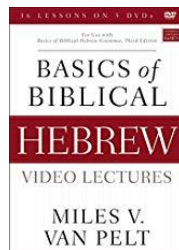
NOTE: The Practical Hebrew lessons will be conducted as a “flipped classroom.” Students will view the video lectures before class, and the classroom time will be dedicated to answering questions, clarifying concepts, consolidating learning, discussing interpretation, and practicing skills. The use of the free Logos software will reduce the need to memorize and allow students to focus on effective interpretation.

1. Video Lectures¹

Van Pelt, Miles. *Basics of Biblical Hebrew Video Lectures*. 3rd ed. Grand Rapids: Zondervan, 2019. ASIN: 0310538602

2. Workbook

Pratico, Gary D., and Miles Van Pelt. *Basics of Biblical Hebrew Workbook*. 3rd ed. Grand Rapids: Zondervan, 2019. ISBN: 978-0310533559



3. Logos Bible Software

Academic Basic: available free from <https://www.logos.com/academic-basic>.

4. Reference Grammar: (Optional)²

Pratico, Gary D., and Miles Van Pelt. *Basics of Biblical Hebrew Grammar*. 3rd ed. Grand Rapids: Zondervan, 2019. ISBN: 978-0310533498

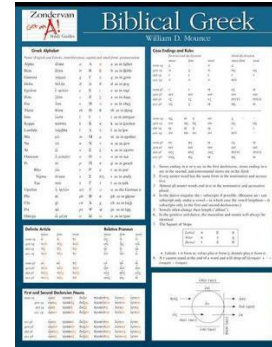
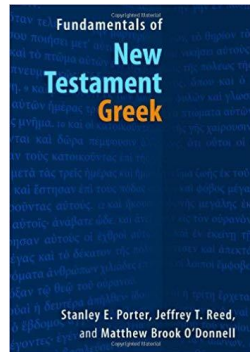
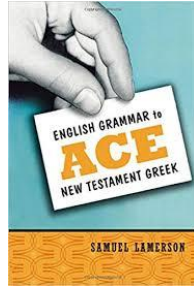
¹ These video lectures will also be used for the subsequent online course, Hebrew Morphology OT 2C03. The video lectures are not available in our bookstore. They may be purchased online from Amazon or Chapters-Indigo as a set of discs that covers both Hebrew 1 and 2, or purchased a download from <https://vimeo.com/ondemand/bbh>. For the download options there is “instant delivery.” They may also be available from other sources.

² This text may seem expensive, but it will be used for the subsequent online course, Hebrew Morphology OT 2C03, as well, for those who continue the study of Hebrew, so you may want to have it available for reference now. If you do, you will only have to buy a lexicon for the second course.

Required Greek Texts:

1. Text:

Lamerson, Samuel. *English Grammar to Ace New Testament Greek*. Grand Rapids, MI: Zondervan, 2004.



2. Greek Summary:

Mounce, William D. *Biblical Greek Laminated Sheet*. Zondervan Get an A! Study Guides. Grand Rapids, MI: Zondervan, 2005.

3. Reference Grammar:

Porter, Stanley E., Jeffrey T. Reed, and Matthew Brook O'Donnell. *Fundamentals of New Testament Greek*. Grand Rapids, MI: Eerdmans, 2010.

4. Online Greek Resource:

Tyndale House: Scripture Tools for Every Person (STEP): available free from stepbible.org

Note: Weekly practice exercises for Greek will be provided in class. Hebrew students will use the BBH workbook. Supplemental handouts will also be provided.

Textbook Purchase: All required textbooks for this class are available from the College's book service, READ On Bookstore, Room 145, McMaster Divinity College. Texts may be purchased on the first day of class. For advance purchase, you may contact READ On Bookstore, 5 International Blvd, Etobicoke, Ontario M9W 6H3: phone 416.620.2934; fax 416.622.2308; email books@readon.ca. Other book services may also carry the texts.

B. SUGGESTED RESOURCES

This is a helpful resource for Hebrew students who are unfamiliar with English grammar:

Van Pelt, Miles V. *English Grammar to Ace Biblical Hebrew*. Grand Rapids, MI: Zondervan, 2010.

This is an excellent resource for doing word studies:

Baxter, Benjamin J. *"In the Original Text It Says": Word-Study Fallacies and How to Avoid Them*. Critical Christian Issues. Gonzalez, FL: Energion, 2012.

Online Resources:

Parable.org (www.parable.org) or **Bible Web App** (biblewebapp.com): These are free online sites.

The Step Bible (<https://www.stepbible.org/>) This will be helpful in finding Hebrew and Greek equivalents for English words.

C. ASSIGNMENTS AND GRADING

Exercises (Practicing the Grammar)	20%
Vocabulary Quizzes	10%
Word Study: Greek or Hebrew (to be completed in 4 separate stages)	20%
Sermon or Commentary Analysis	30%
Exam	20%
Total Grade	100%

Assignment Details:

Note: All assignments must be submitted to the appropriate Assignment Box on Avenue to Learn (A2L) in PDF format only.

Bonus Assignment: Mangled Language Discussions: up to 5% bonus. Due weekly at 11:30 on Mondays.

Each week a question will be posted in a discussion on A2L. It will deal with an interpretation of a biblical text involving the use of language. Students who read and respond with a thoughtful comment to these will earn up to a 5% bonus mark in the course. These will be discussed in the next class.

Assignment 1: Practical Exercises 20%. Due on October 2 , 30, and November 27 at 11:30 pm.

Students will complete weekly exercises that involve the use of material covered in the practical language lessons. These exercises will be collected and graded on three different dates. For **Hebrew**, students will memorize only the most frequent paradigms and complete translation exercises from the BBH Workbook with the assistance of Logos software. For **Greek**, students will be asked to memorize the most frequent paradigms and work on translation exercises using OpenText.org displays.

Assignment 2: Vocabulary 10%. Due as detailed below.

You will be responsible for learning roughly 250 common words in either Hebrew or Greek. You will be required to give an English gloss for each. These words will be provided in class. For **Hebrew**, the vocabulary will be taken from the BBH materials and quizzed online each week on Mondays on A2L. For **Greek**, we will learn the most common/frequent words (inflected form or lexical form) in the New Testament.

Assignment 3: Word Study: Greek or Hebrew 20%. Due in four stages by 11:30 pm on Tuesdays, September 25, October 9, October 23, and November 6 (marked on the schedule with *).

This is a brief overview. Full details will be provided in class and on A2L.

Greek words: ἀγάπη (love), ἀλήθεια (truth), οἶκος (house), σώζω (I save), λατρεύω (I serve), ἐκκλησία (church), οἶδα (I know)

Hebrew words: אָהַבָה (love), אֱמֶת (truth), אָדָם (man/humanity), בַּיִת (house), יָשַׁע (to save), עָבַד (to serve), תּוֹרָה (law), יָדַע (to know)

Step 1: English Word Web (5%)

Pick one word (English gloss) from the list. Create your own original Word Web that expresses the range of all the possible meanings for the English word.

Step 2: Hebrew or Greek Word Search (5%)

Do a search for the equivalent Hebrew or Greek word in the Hebrew Bible or Greek New Testament. This can be done on Logos/STEP; instructions will be given in class. Study the results, and find *as many different* English translations of the word as you can.

Step 3: Meaning Groups (5%)

Study your chart and try to find common links in meaning, like you showed in your word web. Add a column to your chart and identify basic meanings. Try to group similar meanings together, even if they don't have the exact same English translation.

Step 4: Hebrew/Greek Lexicon (5%)

Look up your Hebrew or Greek word in a recommended lexicon. Summarize the range of meanings that the lexicon gives for your word, by group. Submit your list, with one paragraph comparing your groups to the ones in the lexicon, and a second paragraph summarizing what you learned from this exercise.

Assignment 4: Sermon or Commentary Analysis 30%. Due on Tuesday, Nov 27 by 11:30 pm (marked on the schedule with **)

Evaluate and critique a sermon, article, or an excerpt of a commentary (which will be provided by the instructors) in terms of the handling of the original language, Hebrew or Greek. Students should utilize what they learn in class and identify the common exegetical and linguistic fallacies. Students should also provide critical and constructive comments in order to help the speaker/commentator to improve the work. The entire report should be around **8 pages** and must follow the “McMaster Divinity College Style Guidelines for Essays and Theses.”

Assignment 5: Exam 20%. Due on Tuesday, Dec 11 in class

Information will be given in class.

Policy for Late Assignments:

Marks will be deducted for late assignments if there is no valid reason, such as illness (a doctor's note may be required) or serious family crisis. The deduction will be 3% per day. Extensions must be approved before the due date.

IV. COURSE SCHEDULE

Wk	Date	Examples	Language Theory	Practical Hebrew	Practical Greek
		Whole Class	Whole Class	Sections	
1	Sep 10	Mangled Language 1	Introduction and Syllabus	Alphabet: Names, Forms. BBH 1	Alphabet: Names, Forms, Sounds.
2	Sep 18	Mangled Language 2	Purpose of Language: Metafunctions	Vowels, Pronunciation. BBH 2-3	Parts of Speech. Nominal Systems 1: Person, gender, number. Pronunciation. Nouns.
3	Sep 25*	Mangled Language 3	Form and Function; Syntax and Semantics	Parts of Speech. Nominal Systems 1: Person, gender, number. Nouns (Paradigm), Article, Conjunction Waw. BBH 4-5	Nominal Systems 2: Adjective. Paradigms: Article.
4	Oct 2	Mangled Language 4	Words and Theology	Nominal Systems 2: Phrases and Prepositions, Adjectives (Paradigm). BBH 6-7	Nominal Systems 3: Pronouns. Paradigms: 1 and 2 declension noun
5	Oct 9*	Mangled Language 5	Word Studies 1: What do words "mean"?	Nominal Systems 3: Pronouns: personal, relative, demonstrative, interrogative. BBH 8	Verbal Systems 1: Tense and Aspect. Paradigms: Primary endings λύω, εἶμι
6	Oct 14	Thanksgiving Monday; Hybrid/Reading Week			
7	Oct 23*	Mangled Language 6	Word Studies 2: Meaning in Context	Using a Dictionary/Lexicon. Nominal Systems 4: Pronouns: objective, possessive. BBH 9	Verbal Systems 2: Finite and Infinite. Mood. Paradigms: Infinitive, Imperative endings
8	Oct 30	Mangled Language 7	Making Meaning	Nominal Systems 5: Construct Chains; Numbers. BBH 10-11	Using a Dictionary/Lexicon
9	Nov 6*	Mangled Language 8	Meaning and Ranks, Embedding	Verbal Systems 1: Tense/Aspect/Mood; Stems; Qal Perfect Strong (Paradigm). BBH 12-13	Verbal Systems 3: Voice. Paradigms: Secondary endings λύω, εἶμι
10	Nov 13	Mangled Language 9	Meaning and Choice	Verbal Systems 2: Finite/Non-finite; Qal Perfect Weak. BBH 14	Verbal Systems 4: Participle. Paradigms: Common Formatives
11	Nov 20	Mangled Language 10	Exegetical Fallacies 1	Verbal Systems 3: Qal Imperfect Strong (Paradigm). BBH 15	Clauses and Sentences. Prepositions and Conjunctions.
12	Nov 27**	Mangled Language 11	Exegetical Fallacies 2	Verbal Systems 4: Qal Imperfect Weak. BBH 16	Discourse Issues.
13	Dec 4	Mangled Language 12	Review	Review	Review
14	Dec 11	Exam	--	--	--

V. CLASSROOM BEHAVIOUR, ATTENDANCE, AND PARTICIPATION

- Students are expected to attend all classes. Missing a class in order to work on other assignments is a consequence of poor planning and is unacceptable. If you are genuinely ill, and possibly contagious, your absence is acceptable.
- Students are expected to be on time for class. Admittedly, unavoidable delays do occasionally happen. If you arrive late, please enter as quietly as possible and give an explanation to the professor after class.
- Students are also expected to stay for the entire class session.
- Computers and tablets should only be used for class related purposes, not for social networking and the like.
- All thoughtful student participation is welcome. There are no “dumb questions” or “stupid answers.” Students will respect the contributions of other students, although they may disagree, and respond to them without ridicule or scorn.
- Students may eat in class if they do so unobtrusively and clean up afterwards.

VI. GENERAL GUIDELINES FOR THE SUBMISSION OF WRITTEN WORK

Style

All stylistic considerations (including but not limited to questions of formatting, footnotes, and bibliographic references) must conform to the McMaster Divinity College Style Guidelines for Essays and Theses

<http://www.mcmasterdivinity.ca/sites/default/files/documents/mdcstyleguide.pdf>. Failure to observe appropriate form will result in grade reductions.

Gender Inclusive Language

McMaster Divinity College uses inclusive language for human beings in worship services, student written materials, and all its publications. It is expected that inclusive language will be used in chapel services and all MDC assignments. In reference to biblical texts, the integrity of the original expressions and the names of God should be respected, but you will need to use gender-inclusive language for humans, and you will need to quote from a gender-inclusive version such as the following: NRSV (1989), NCV (1991), TEV/GNB/GNT (1992), CEV (1995), NLT (1996), TNIV (2005), and the Common English Bible (CEB 2011).

Academic Honesty

Academic dishonesty is a serious offence that may take any number of forms, including plagiarism, the submission of work that is not one's own or for which previous credit has been obtained, and/or unauthorized collaboration with other students. Academic dishonesty can result in severe consequences, e.g., failure of the assignment, failure of the course, a notation on one's academic transcript, and/or suspension or expulsion from the College. Students are responsible for understanding what constitutes academic dishonesty. Please refer to the Divinity College Statement on Academic Honesty at <https://mcmasterdivinity.ca/rules-regulations/>.

Disclaimer: This syllabus is the property of the instructors and is prepared with currently available information. The instructor reserves the right to make changes and revisions up to and including the first day of class.