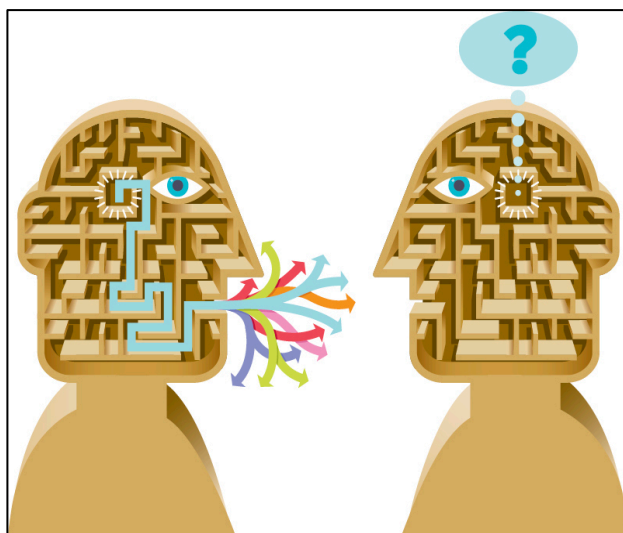




**MCMASTER DIVINITY COLLEGE  
COURSE SYLLABUS  
FALL 2020**

**GREEK 1: INTRODUCTION  
(NT 1B03)**



**INSTRUCTOR:**

**Francis G. H. Pang, PhD**

Divinity College Room 243

Phone: 1.905.525.9140 x21619

Email: [pangfg@mcmaster.ca](mailto:pangfg@mcmaster.ca)

**CO-LECTURER:**

**Darlene Seale, MA**

Email: [seald@mcmaster.ca](mailto:seald@mcmaster.ca)

**Online Asynchronous/Synchronous:** Most of the work is asynchronous. Weekly online synchronous classes/workshops will be arranged at the mutual convenience of students and the professor.

There will be a course web page on [Avenue to Learn](#) (A2L).

**I. COURSE DESCRIPTION**

**Note:** This is an online course. Students must have a basic familiarity with computers in order to participate, including the ability to navigate web sites, videoconference,<sup>1</sup> and make and upload PDFs of assignments (from Word: File > Save as PDF).

People like to talk about what the Bible means, sometimes even with reference to “the original Greek.” However, for readers and teachers of the Bible to access useful resources and make insightful observations about the meaning of a text without making regrettable errors, they need to understand how languages make meaning—and how Greek makes meaning. This course explores the world of human language: language theory and how it applies to understanding texts. It will also review English grammar—which many students were never taught—as a basis for understanding Greek grammar. This will enable students

<sup>1</sup> Webex is free for students when I set up the meetings. Here is a basic video explaining how Webex works: <https://www.youtube.com/watch?v=fE5FnEUKtaE> (for the purposes of this video, you are the woman logging on).

to be better prepared to engage with our main task: learning the basics of Greek, focusing on how the linguistic elements lead to meaningful and accurate interpretation. There will necessarily be some memorization of vocabulary and the three main paradigms, but this course will also significantly reduce the amount of memorization usually required in language learning, since the focus is on understanding and application. The first part of each class (Mangled Language and Theory) will be shared with the Hebrew 1 Introduction class since the concepts apply to both.



This course will appeal to two types of students:


1. Those who want to begin the process of learning biblical languages, especially those who plan on doing more advanced learning. Subsequent courses will teach the intelligent use of Greek resources as well as a more detailed knowledge of the languages and application to the biblical text.
2. Those who do not plan to study biblical languages in depth (or those who are not sure whether they do) but want to understand how languages work, how to move from one language to another, and how to interpret the biblical text responsibly. Those who want to continue with deeper study may do so.

**NT 1B03 MDiv/MTS Specializations:** (BS/PS) Biblical Studies, Pastoral Studies (See [http://www.mcmasterdivinity.ca/sites/default/files/documents/mdiv-mts\\_specializations\\_and\\_outcomes.pdf](http://www.mcmasterdivinity.ca/sites/default/files/documents/mdiv-mts_specializations_and_outcomes.pdf))

## II. LEARNING OUTCOMES



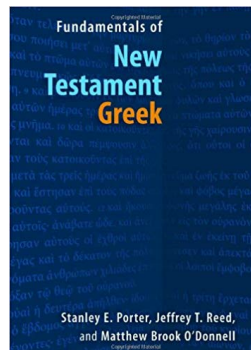
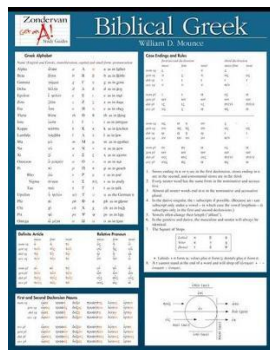
- a.  Knowing
  - To know the major grammatical categories in English and Greek
  - To understand how language makes meaning
  - To understand the functions of language such as the interpersonal, experiential, and textual
  - To understand what constitutes a legitimate “word study”
  - To recognize and understand key biblical vocabulary in Greek
  - To begin to learn the grammatical forms/paradigms in Greek
- b.  Being
  - “To present yourself to God as one approved, a worker who does not need to be ashamed and who correctly handles the word of truth.” (2 Tim 2:15)
  - To be a mature interpreter of Scripture as taught by the Spirit (1 Cor 2:6–16)
  - To allow the Scripture to motivate, form, and transform our faith, worship, and Christian way of life

- c.  Doing
- To describe how choices in language affect the meaning of the biblical text
  - To describe the functions of the basic grammatical forms in Greek and use them in interpretation
  - To begin to read and translate Greek texts
  - To interpret the biblical text meaningfully without committing common mistakes

### III. COURSE REQUIREMENTS

#### A. TEXTS AND RESOURCES

**NOTE:** This course will be conducted as a “flipped classroom.” Students will read the text and view the video lectures and then complete exercises before class. The weekly online classroom/workshop time (via Webex) will be dedicated to answering questions, clarifying concepts, consolidating learning, discussing interpretation, and practicing skills. These online synchronous classes/workshops will be arranged at a time that is mutually convenient for the students and professor. They are recorded and made available privately to students for review and asynchronous study.



#### 1. Greek Summary:

Mounce, William D. *Biblical Greek Laminated Sheet*. Zondervan Get an A! Study Guides. Grand Rapids, MI: Zondervan, 2005.

#### 2. Reference Grammar (Optional):

Porter, Stanley E., Jeffrey T. Reed, and Matthew Brook O'Donnell. *Fundamentals of New Testament Greek*. Grand Rapids, MI: Eerdmans, 2010.

#### 3. Online Greek Resource:

Tyndale House: Scripture Tools for Every Person (STEP): available free from [stepbible.org](http://stepbible.org)

**Note:** Weekly practice exercises for Greek will be provided in class. Supplemental handouts will also be provided.

#### 4. MDC Video Lectures (required)

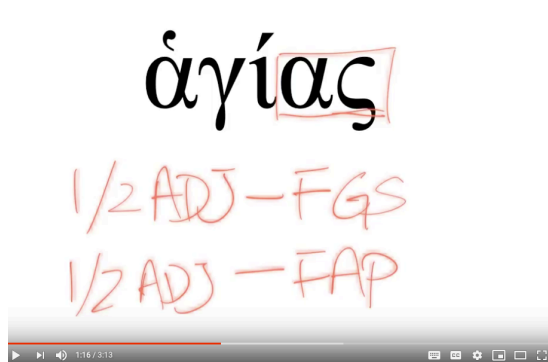
A series of video lectures has been prepared by the professor specifically for this course, focusing on language theory and interpretation. They also review and expand textbook concepts. They are free and available on A2L.

### 5. Greek Material (required)

Greek material (video lectures, tutorials, practice exercises, handouts, etc.) will be posted on Avenue to Learn (A2L) weekly.

#### 2ND DECLENSION NOUN ENDINGS

		Masc./Fem.	Neuter
SINGULAR	Nom.	-ος	-ον
	Gen.	-ου	-ου
	Dat.	-ῳ	-ῳ
	Acc.	-ον	-ον
PLURAL	Nom.	-οι	-α
	Gen.	-ων	-ων
	Dat.	-οις	-οις
	Acc.	-ους	-α



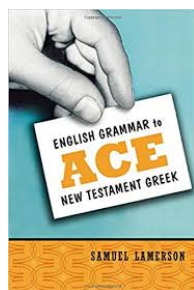
### 6. Vocabulary and Online Resources (keyed to the text):

A number of vocabulary and supplemental resources are given on A2L. A Quizlet (free online flashcard program) class will be created with study sets for student to memorize and review key paradigms and common vocabularies. Please refer to the **course website**: <http://avenue.mcmaster.ca/> (Log in with your MAC ID).

**Textbook Purchase:** All required textbooks are available from MDC's book service, READ On, located in the new Hurlburt Family Bookstore, located beside the Chapel entrance, opposite Cullen Hall at McMaster Divinity College. It will be opening September 8, 2020, **by appointment only**, due to COVID-19 safety measures. For advance purchase, you may contact READ On Bookstore, 5 International Blvd, Etobicoke, Ontario M9W 6H3 by phone 416.620.2934, fax 416.622.2308, or email [books@readon.ca](mailto:books@readon.ca). Other book services may also carry the texts.

## B. SUGGESTED RESOURCES

This is a helpful resource for Greek students unfamiliar with English grammar:



Lamerson, Samuel. *English Grammar to Ace New Testament Greek*. Grand Rapids, MI: Zondervan, 2004.

And this is an excellent resource for doing **appropriate word studies**:

Baxter, Benjamin J. *"In the Original Text It Says": Word-Study Fallacies and How to Avoid Them*. Critical Christian Issues. Gonzalez, FL: Energion, 2012.

## C. PROCTORING

This is an online course and, especially in this difficult time when we are dealing with the COVID-19 pandemic, all tests and exams will be proctored remotely using Webex or a similar video conferencing application such as Zoom or Skype. Detailed instructions will be given on A2L and in the workshops.

#### D. ASSIGNMENTS AND GRADING

<b>Exercises (Practicing the Grammar)</b>	<b>30%</b>
<b>Vocabulary Quizzes</b>	<b>10%</b>
<b>Term Test</b>	<b>20%</b>
<b>Sermon or Commentary Analysis</b>	<b>20%</b>
<b>Exam</b>	<b>20%</b>
<b>Total Grade</b>	<b>100%</b>

##### Assignment Details:

**Note: All assignments must be submitted to the appropriate Assignment Box on Avenue to Learn (A2L) in PDF format only.**

**Bonus Activity: Mangled Language Discussions: up to 5% bonus.**

Each week a question will be posted in a discussion on A2L. It will deal with a “questionable” interpretation of a biblical text involving the use of language. Students who read and respond with a thoughtful comment to these will earn up to a 5% bonus mark in the course. These will be expanded on in the follow-up Mangled Language videos.

**Assignment 1: Practical Exercises 30%.** Due on October 5, October 31, November 20, December 9 at 11:30 pm. Indicated on the schedule below.

Students will complete weekly exercises provided by the instructors that involve the use of material covered in the weekly Greek videos and tutorials. The online workshops will focus in part on discussing and answering questions about these exercises to help you learn. We will work through examples together. These exercises will be collected and graded on four different dates. More details will be posted on A2L.

**Assignment 2: Vocabulary 10%.** Due as detailed below.

You will be responsible for learning roughly 150-200 most common words in the Greek New Testament as well as the most common paradigms (the article, verb endings, etc.). You will be required to give an English gloss for each. The vocabulary and the most common paradigms will be quizzed WEEKLY on A2L.

**Assignment 3: Term Test: Greek 20%.** Week of November 2-5.

There will be a term test during the week of Nov 2. This will be conducted with online video monitoring at a time mutually agreeable to the students and the proctor. More information will be given on A2L.

**Assignment 4: Sermon or Commentary Analysis 20%.** Due on Monday, Nov 30 by 11:30 pm (marked on the schedule with \*\*)

Evaluate and critique a sermon, article, or an excerpt of a commentary (which will be provided by the instructor) in terms of the handling of the original Greek language. Students should utilize what they learn in class and identify the common exegetical and linguistic fallacies. The entire report should be around **8 pages** and must follow the “McMaster Divinity College Style Guidelines for Essays and Theses.” Details will be provided on A2L.



**Assignment 5: Exam 20%.** Due by Friday, December 11

Information will be given in class.

### Policy for Late Assignments:

Marks will be deducted for late assignments if there is no valid reason, such as illness (a doctor’s note may be required) or serious family crisis. The deduction will be 3% per day. Extensions must be approved before the due date.

## IV. COURSE SCHEDULE

Wk	Week of	Interpretation (MDC Videos on A2L) <sup>2</sup>	Language Theory (MDC Videos on A2L)	Practical Greek (Greek Videos Lectures on A2L)	Greek Tutorial (Short Hands on video on A2L)
1	Sep 14	<b>Mangled Language 1:</b> Kinds of Love	<b>Introduction and Syllabus</b>	<b>Alphabet, Vowels, Pronunciation:</b> Names, Forms, Sounds.	Alphabet
2	Sep 21	<b>Mangled Language 2:</b> Theologizing	<b>Theory 1:</b> Functions of Language	<b>Alphabet, Vowels, Pronunciation:</b> Continued.	Pronunciation and Vowels
3	Sep 28	<b>Mangled Language 3:</b> Shema	<b>Theory 2:</b> Words and Theology	<b>Nominal Systems 1:</b> Case, gender, number	The Greek Article
4	Oct 5 Exercise Due Oct 5	<b>Mangled Language 4:</b> Soul	<b>Theory 3:</b> Form and Function; Syntax and Semantics	<b>Nominal Systems 2:</b> Noun and pronouns	1 and 2 Declension Nouns
5 	Oct 12 Thanksgiving Oct 12	<b>Mangled Language 5:</b> Word Studies and Lexicons	<b>Theory 4:</b> How to do word study?	<b>Nominal Systems 3:</b> Nominal Group	Greek Adjectives
6 	Oct 19	<b>Mangled Language 6:</b> Gender Inclusive Debate	--	<b>Verbal Systems 1:</b> Finite and Non-finite, Voice.	Infinitives
7	Oct 26 Exercise Due Oct 31	<b>Mangled Language 7:</b> TBA	--	<b>Verbal Systems 2:</b> Tense and Aspect	Primary Active endings

<sup>2</sup> These are short (15–20 min) videos dealing with misinterpretations. An opportunity for bonus marks.

8	Nov 2 Term Test Nov 6	<b>Mangled Language 8:</b> TBA	--	<b>Test Review</b>	
9	Nov 9	<b>Mangled Language 9:</b> Punctuation	<b>Theory 5:</b> Exegetical Fallacies 1	<b>Using a Greek Lexicon</b>	Primary M/P endings
10	Nov 16 Exercise Due Nov 20	<b>Mangled Language 10:</b> Be Holy	<b>Theory 6:</b> Exegetical Fallacies 2	<b>Verbal Systems 3:</b> Mood	Secondary Active endings
11	Nov 23	<b>Mangled Language 11:</b> Hebrew Discourse	<b>Theory 7:</b> Meaning, Choice, and Ranks	<b>Verbal Systems 4:</b> Greek Participles	Secondary M/P endings
12	Nov 30**	<b>Mangled Language 12:</b> Greek Discourse	<b>Theory 8:</b> Discourse	<b>Sentences and wrapping</b>	
13	Dec 7 Exercise Due Dec 9 Exam Dec 11	--	--	<b>Exam Review</b>	

## V. CLASSROOM BEHAVIOUR, ATTENDANCE, AND PARTICIPATION

- All thoughtful student participation is welcome. There are no “dumb questions” or “stupid answers.” Students will respect the contributions of other students, although they may disagree, and respond to them without ridicule or scorn.
- Students are expected to attend all online classes. Missing a class in order to work on other assignments is a consequence of poor planning and is unacceptable. If you are genuinely ill or there is a serious emergency, your absence is acceptable. Please email the professor to explain.
- Students are expected to be on time for class. Admittedly, unavoidable delays do occasionally happen. If you arrive late, please email an explanation to the professor after class.
- Students are also expected to stay for the entire class session.

## VI. GENERAL GUIDELINES FOR THE SUBMISSION OF WRITTEN WORK

### Style

All stylistic considerations (including but not limited to questions of formatting, footnotes, and bibliographic references) must conform to the McMaster Divinity College Style Guidelines for Essays and Theses

<http://www.mcmasterdivinity.ca/sites/default/files/documents/mdcstyleguide.pdf>. Failure to observe appropriate form will result in grade reductions.

### Gender Inclusive Language

McMaster Divinity College uses inclusive language for human beings in worship services, student written materials, and all its publications. It is expected that inclusive language will be used in chapel services and all MDC assignments. In reference to biblical texts, the integrity of the original expressions and the names of God should be respected, but you will



need to use gender-inclusive language for humans, and you will need to quote from a gender-inclusive version such as the following: NRSV (1989), NCV (1991), TEV/GNB/GNT (1992), CEV (1995), NLT (1996), TNIV (2005), and the Common English Bible (CEB 2011).

### **Academic Honesty**

Academic dishonesty is a serious offence that may take any number of forms, including plagiarism, the submission of work that is not one's own or for which previous credit has been obtained, and/or unauthorized collaboration with other students. Academic dishonesty can result in severe consequences, e.g., failure of the assignment, failure of the course, a notation on one's academic transcript, and/or suspension or expulsion from the College. Students are responsible for understanding what constitutes academic dishonesty. Please refer to the Divinity College Statement on Academic Honesty at <https://mcmasterdivinity.ca/rules-regulations/> .

**Disclaimer:** This syllabus is the property of the instructors and is prepared with currently available information. The instructor reserves the right to make changes and revisions up to and including the first day of class.