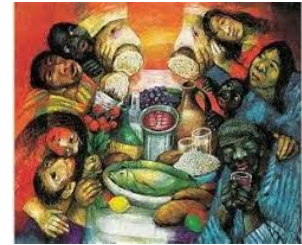




McMaster Divinity
College

Welcoming the Other
NT/MS 5XH5
Hybrid DPT Course
Spring 2019



McMaster Divinity College
Dr. Cynthia Long Westfall
westfal@mcmaster.ca

Online: April 23–June 5
Webex online: April 23 3:30 EST

Fall Semester 2020

2 Hour Introductory WebEx Session: first week of class (TBA)
On-Line Videos

In-Class Sessions: Tuesday, Nov 3, 1:30–5:30 p.m./Wednesday, Nov 4, 9 a.m.–5:30 p.m.
Closing WebEx Session: last week of class (TBA)

Biography

Dr. Cindy Westfall is the Associate Professor of New Testament at McMaster Divinity College. Her research interests are wide-ranging including Greek, linguistics and discourse analysis, the book of Hebrews, Revelation and the Catholic Epistles, Bible Translation, Gender and Ministry, and most relevant for this course, Biblical Social Justice. She is the author of *A Discourse Analysis of Hebrews: The Relationship between Form and Meaning* and *Paul and Gender: Reclaiming the Apostle's Vision for Men and Women in Christ* and co-edited *The Bible and Social Justice: Old Testament and New Testament Foundations for the Church's Urgent Call*. She has been committed to crossing the boundaries in church planting and participation in the growth of urban church ministry. She is married to Glenn and lives in Dundas, ON.

Course Description

This course is a place where you can process some of the recent events that broke our hearts, by addressing broken relationships from issues such as social isolation, mental illness/depression, exclusion, victimization and racism. Seek to develop biblical responses in your reading of Scripture, your theology, ministry and your personal transformation. The welcome of the other is foundational in the identity and function of the people of God, and intimately connected with God's presence, promise and blessing. How do we define welcome? Who do we identify as the other (and who are "we"?)? What practices can we cultivate to welcome the other? The framework of this course will draw on concepts connected with the *invitation of radical hospitality* combined with *the movement towards incarnational actions* of becoming the other, crossing boundaries, sojourning and tearing down walls. By sharing our life, experiences and research interests, we will together identify the other, expand and build on the definition and practices of welcome, and populate the category of the other along with input from a select variety of people in the field and on the front lines. During the in-class time, we will concentrate on pooling our resources and building the biblical and theological bases for the praxis of radical hospitality together with incarnational identity and action rooted in the nature of God.

This is a hybrid course in which we combine two in-class sessions with online components: we will use Avenue to Learn as well as other online technologies. We open the semester with an online WebEx session and we will close it with an online WebEx session.

Course Objectives

Knowing

- Understand how the design of practice-led research intersects and functions in the relationship between one's identity, life experience, ministry and research interest and specific practices of welcoming the other
- Possess a strong biblical and theological basis for your practice-led research that can be clearly articulated
- Extend your understanding of welcome and the other to larger contexts and new possibilities.

Doing

- Develop your specialization in terms of the nature and needs of your ministry target group and the practices/disciplines of welcome
- Present your work, accept critique & function as a resource to others in the course
- Design practical implementation of appropriate actions
- Demonstrate practice-led research in writing

Being

- Awareness of your place, connection and circle of influence
- Cultivated empathy for the other based on who you are & your past experience
- Commitment to hospitality and an incarnational ministry consistent with your calling
- Maturing habits of devotion & self-care that support the demanding nature of the discipline

Core Texts to be included in the Reading

Oden, Amy. *And You Welcomed Me: A Sourcebook on Early Hospitality as a Christian Tradition*. Nashville: Abingdon, 2010. 318 pp.

Pohl, Christine. *Making Room: Recovering Hospitality as a Christian Tradition*. Brewster, MA: Paraclete Press, 2011. 219 pp.

Warren, Michelle Ferrigno. *The Power of Proximity: Moving Beyond Awareness to Action*. Downers Grove, IL: InterVarsity, 2017. 182 pp.

Volf, Miraslav. *Exclusion and Embrace: A Theological Exploration of Identity, Otherness, and Reconciliation*. Updated ed; Nashville: Abingdon, 2019. 336 pp.

Papers distributed to the class through Avenue to Learn and Dropbox

Recommended

Fraser, Eloise Renich. *Confessions of a Beginning Theologian*. Downers Grove: IVP Academic, 1998.

Purchasing Textbooks

All required textbooks are available from MDC's book service, READ On, located in the new Hurlburt Family Bookstore, located beside the Chapel entrance, opposite Cullen Hall at McMaster Divinity College. It will be opening September 8, 2020, by appointment only, due to COVID-19 safety measures. For advance purchase, you may contact READ On Bookstore, 5 International Blvd, Etobicoke, Ontario M9W 6H3 by phone 416.620.2934, fax 416.622.2308, or email books@readon.ca. Other book services may also carry the texts.

Course Requirements

View Online Videos (attendance)

Students are required to view the scheduled weekly videos online.

Online Participation (15%)

There will be a couple of venues in which you can contribute to the course on Avenue to Learn (A2L): (1) you will perform and submit any “exercises” in the weekly videos (2) you will share content or initiate topics of discussion as directed in online presentations and (3) you will respond or interact with the contribution/content/topics of others. Contribute content once a week and interact with a minimum interaction or response to five others each week (on the average).

Reading Report (15%)

Complete **4,000 pages of reading** for the course and submit a **bibliography due 11:59 p.m. on December 11, submitted to A2L in PDF form**. List the book, the pages read and summarize the percentage of reading. You may include books from your Preliminary Annotated Bibliography, but omit any material that you have read for previous courses and the papers of other students.

Written assignments

Preliminary Annotated Bibliography & Presentation (10%)

The student will develop an annotated bibliography of approximately 5–10 resources (at least 1,500 pages) that are the most informative related to your specific interest/category of “other” in the area of your research interest (see schedule for categories), and write a 100-150 word annotation for each resource. Relevant resources previously read for other courses may be submitted (mark with *). This is your summary of the best sources available in your area of interest. **Submit this assignment to A2L and to DropBox in PDF form due 11:59 p.m. on Friday, October 16 to share with others in the course before the in class session. Be prepared to present your bibliography in our in-class session.**

Summary of Biblical and Theological Foundations (20%)

Utilizing material from the class sessions, online materials and reading the student will describe the biblical and theological basis for *your specific practice-led research* in welcoming the other. **The paper will be approximately 3,000 words (12 pages), and due 11:59 p.m. on Monday, November 9, submitted to A2L in PDF form.**

Include footnotes and bibliography. For all matters of style and form, consult the McMaster Divinity College Style Guidelines for Essays and Theses:

<http://www.macdiv.ca/students/documents/MacStyleGuide.pdf>

Major Paper on Practice-Led Research in Welcoming the Other (40%)

The student will demonstrate practice-led research through a particular focus/interest in welcoming the other and be prepared to discuss their research with the class on June 5. Their paper will include an introduction, five sections and a conclusion (subheadings are advised):

- Clearly explain how the paper is rooted based in your identity, experiences and practice
- Explore the challenges and problems that provoke this study (i.e. Why does this ministry practice need to be addressed?)
- Identify and develop a procedure for a methodology suitable for researching this topic.
- Integrate the biblical and theological foundations for practice from your previous paper with appropriate revisions (see #3)
- A consideration of new approaches to address and improve ministry practice (local and beyond) and reflection on the application to your own ministry.

The paper will be approximately 8,000 words. It is due 11:59 p.m. on Friday, December 4 (submitted to A2L) and presented during the final course session on Webex.

Include footnotes and bibliography. For all matters of style and form, consult the McMaster Divinity College Style Guidelines for Essays and Theses:

<http://www.macdiv.ca/students/documents/MacStyleGuide.pdf>

Class Presentation

Present/summarize where they are in their research to the class the closing Webex session online (TBA). The student may choose to make their papers available to the rest of the course in DropBox. All papers must be submitted to A2L (but also DropBox for sharing).

If the student fails to submit the paper on time, a late penalty of 2% a day will be applied to the paper's final grade until 7 days, when it will be 5% a day. **No papers will be accepted after Friday, December 11.**

Course Assessment Summary

➤ Online Participation		15%
➤ Reading		15%
➤ Preliminary Annotated Bibliography & Presentation	10%	
➤ Summary of Biblical and Theological Foundations		20%
➤ Paper on Welcoming the Other	40%	

Classroom Behavior

Attendance

Students are required to be present for the face to face sessions on May 7 & 8. Students are expected to stay for the entire class sessions, unless arranged in advance.

Participation

Please respect the opinions of others without disrespect or ridicule, even if you do not agree with them. However, feel free to respond logically and critically in an orderly manner. Similarly content in all papers should be irenic while it may critique alternate positions.

Students are not expected to be doing work on any other subject except that which is appropriate in the course outline.

Students are not to carry on off-topic conversations in class in person, the phone or on the internet..

We will eat and drink in class—please help with set up and clean up.

Students who fail to respect these guidelines will be dismissed from the class with consequences.

MDC Policies

Academic Honesty

Academic dishonesty is a serious offence that may take any number of forms, including plagiarism, the submission of work that is not one's own or for which previous credit has been obtained, and/or unauthorized collaboration with other students. Academic dishonesty can result in severe consequences, e.g., failure of the assignment, failure of the course, a notation on one's academic transcript, and/or suspension or expulsion from the College.

Students are responsible for understanding what constitutes academic dishonesty. Please refer to the Divinity College Statement on Academic Honesty ~ <http://www.mcmasterdivinity.ca/programs/rules-regulations>

Gender Inclusive Language

McMaster Divinity College uses inclusive language for human beings in worship services, student written materials, and all of its publications. In reference to biblical texts, the integrity of the original expressions and the names of God should be respected. The NRSV and TNIV are examples of the use of inclusive language for human beings. It is expected that inclusive language will be used in chapel services and all MDC assignments.

Style

All stylistic considerations (including but not limited to questions of formatting, footnotes, and bibliographic references) must conform to the McMaster Divinity College Style Guidelines for Essays and Theses

Failure to observe appropriate form will result in grade reductions.

Appointments & office hours

Contact me if I can assist you in any way via A2L or e-mail: westfal@mcmaster.ca

Phone: 289-238-9836

There are no set office hours, but I am available by appointment

Disclaimer

This syllabus is the property of the instructor and is prepared with currently available information. The instructor reserves the right to make changes and revisions up to and including the first day of class.

Course Schedule

Week 1: September 14–18, Webex online: during the first week

Introduction to the Course: Welcoming the other

Self –Introduction: Establishing our own identities (intersectionality): Who are “we”?

- Faith
- Race
- Nationality
- Location
- Gender
- Sexuality
- Class
- Education

Week 2: September 21–25

Online video and discussion forum

Life maps, theological reflection and practice-led discipline: tools to clarify what is “practice-led”: explore identity, experiences and practice

Week 3: September 28–October 2

Pooling of our resources on the other

A biblical theology of welcome, Part 1

A theology of Welcome: empathy, incarnational presence, invitation, friending, becoming the other

Week 4: October 5–9

Biblical theology, Part 2

- Theologies, Theories and Philosophies
- Social Identity theory
- Spatial theory
- Post-Colonial Interpretation, Liberation Theology
- Identifying and utilizing methodologies

Week 5; October 12–16

Introduction to categories of other

Online video, discussion forum

- Faith
- Race
- Nationality
- Culture
- Gender
- Class
- Education
- Those with limited resources (income, options, genetics)
- Sexuality
- Victims
- Perpetrators
- Those who suffer consequences of their own behavior

Preliminary Annotated Bibliography due 11:59 p.m. on Friday, October 16

Week 6: October 19–24 Hybrid in-class sessions

Week 7: October 26–31 Hybrid in-class sessions

Week 8: November 2–7, Hybrid In-class sessions

Tuesday, November 3, 1:30–5:30 p.m.

Wednesday, November 4, 9 a.m.–5:30

Pooling our resources on the other

Utilizing our Life Map: tools to clarify how this is “practice-led”: explore

Identity, experiences and practice

Planning encounters/interactions

Determining portfolio projects

Week 9: November 9–13

The Marginalized & Needy

Online video, videos of those on the field and discussion forum

Homeless and poor

The socially isolated

Disabled

Mentally ill

Elderly

Immigrants

Refugees

Biblical and Theological Foundations paper due 11:59 p.m. on Monday, November 9

Week 10: November 16–20 ETS/SBL

Week 11: November 23–27

The Oppressed, Victims & Those “We” have Wronged/Offended

Online video, videos of those on the field and discussion forum

Victims of crime

Women as paradigmatic

Victims of discrimination

Jews, Genocide & Reconciliation

Indigenous people (Canadian and global)

Week 12: November 30–December 4

Online video on troubleshooting

Major papers due Friday, December 4 by 11:59 p.m.

Week 13: December 7–11

Closing WebEx TBA

Reading Report due Friday, Dec 11, 11:59 p.m.