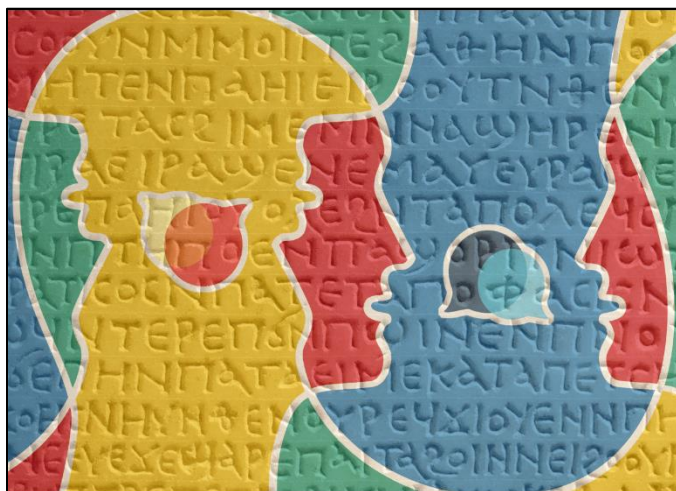




GUIDE TO BIBLICAL LANGUAGES: GREEK I

NT 1B03



INSTRUCTORS:

Nathan Nadeau, MTS

Email: nadeaun@mcmaster.ca

Francis G. H. Pang, PhD

Online Asynchronous/Synchronous:

Most of the work is *asynchronous*.

Weekly online synchronous classes are on Wednesdays, from 2:00–3:50 PM, EST.

I. COURSE DESCRIPTION

People like to talk about what the Bible means, sometimes, even with reference to “the original Greek.” However, for readers and teachers of the Bible to access useful resources and make insightful observations about the meaning of a text—without making regrettable errors—they need to understand *how languages make meaning*, and they need to understand *how Greek makes meaning*. This course explores the world of human language: language theory and how it applies to understanding texts. It will also review English grammar—which many students were never taught—as a basis for understanding Greek grammar. This will enable students to be better prepared to engage with our main task: learning the basics of Greek and focusing on how the linguistic elements lead to meaningful and accurate interpretation. In this course, there will necessarily be some memorization of vocabulary and the three main paradigms (the article, nominal endings, and verb endings), but this course will also significantly reduce the amount of memorization usually required in language learning, since the focus is on *understanding* and *application*.

This course will apply to two types of students:

1. Those who want to begin the process of learning biblical languages, especially those who plan on doing more advanced learning (Subsequent courses will teach the intelligent use of Greek resources as well as a more detailed knowledge of the languages and application to the biblical text).

2. Those who do *not* plan to study biblical languages in depth (or those who are not sure whether they want to) but want to understand how language work, how to move from one language to another, and how to interpret the biblical text responsibly (those who want to continue with deeper study are encouraged to do so!).

II. MODE OF DELIVERY

This course will include a blend of both asynchronous (on your own time) and synchronous (live, in real-time) online learning. Students must have a basic familiarity with computers to participate, including the ability to navigate Avenue to Learn (A2L) course site, participate in synchronous sessions using Zoom, and make and upload PDFs of assignments to A2L. Weekly online synchronous meetings will be held on Wednesday from 2:00-3:50 pm. There are three main components to the course (“Mangled Language,” “Language Theory,” and “Practical Language”). Students will view the assigned video lectures, study the handouts, and then complete exercises before coming to the synchronous meeting. Our weekly meeting via Zoom will be dedicated to answering questions, clarifying concepts, consolidating learning, discussing interpretation, and practicing skills.

Since this is an online course, all tests and exams will be proctored remotely using the Respondus system. Detailed instructions will be given on A2L and in class. Students are also encouraged to meet with the instructors (by appointment either in person or on Zoom) to discuss any questions raised in the forum and/or the assignments. Students should expect to commit at least 4-5 hours per week on the course.

III. LEARNING OUTCOMES



Knowing

- Know the major grammatical categories in English and Greek
- Understand how language makes meaning
- Recognize and understand a number of words from the Greek New Testament
- Begin to learn the grammatical forms/paradigms in Greek



Being

- Be “one approved, a worker . . . who correctly handles the word of truth.” (2 Tim. 2.15)
- Be a mature interpreter of scripture as taught by the Spirit (1 Cor 2:6–16)
- Be someone who allows scripture to motivate, form, and transform your faith, worship, and Christian way of life



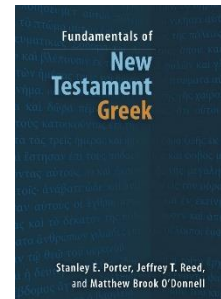
Doing

- Be able to describe how choices in language affect the meaning of the biblical text
- Be able to describe the functions of the basic grammatical forms in Greek and use them in interpretation
- Be able to read and understand Greek texts from the New Testament
- Be able to communicate the biblical text meaningfully without committing common mistakes

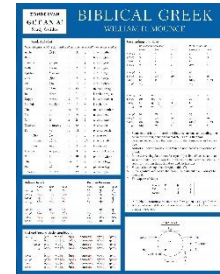
IV. COURSE REQUIREMENTS: TEXTS AND RESOURCES

Note: this course will be conducted as a “flipped classroom,” which means that the students are required to come to the weekly tutorial having already studied the relevant materials for the given week.

1. **Textbook:** Porter, Stanley E., Jeffrey T. Reed, and Matthew Brook O’Donnell. *Fundamentals of New Testament Greek*. Grand Rapids, MI: Eerdmans, 2010. *While your learning content will be covered in online materials, this text is a vital reference for Greek I and II.*



2. **Reference Sheet:** Mounce, William D. *Biblical Greek Laminated Sheet*. Zondervan Get an A! Study Guides. Grand Rapids, MI: Zondervan, 2005. *You may find this sheet (it is a few pages) helpful as a quick reference to some of the basics you will learn in Greek I and II; you will find more detailed charts in the back of the textbook above.*



3. **MDC Video Lectures:** A series of video lectures has been prepared by MDC’s Dr. Francis Pang specifically for this course, focusing on language theory and interpretation. They also review and explain concepts in the textbook. These video lectures will be found on A2L, and are required viewing for your learning content.
4. **Materials: Assignments, Handouts, Lesson Slideshows:** Greek materials will be posted on Avenue to Learn and will be accessible there; this includes your weekly practice exercises and supplemental material. **Vocabulary:** A *Quizlet* (free online flashcard program) group will be created which includes study sets for students to memorize and review vocabulary for the course.

5. Additional Resource:

Baxter, Benjamin. *“In the Original It Says”*: *Word-Study Fallacies and How to Avoid Them*. Critical Christian Issues. Gonzalez, FL: Energion, 2012.

Textbook Purchase:

Required textbooks are available from READ ON Books, located in the Hurlburt Family Bookstore off of Cullen Hall. For advance purchase, orders can be placed by phone (416.620.2934), text (416.668.3434), or email (books@readon.ca), with payment by e-transfer, credit card, or cheque; shipping is free for students.

V. COURSE REQUIREMENTS: ASSIGNMENTS AND GRADING

Exercises (practicing the grammar)	30%
Vocabulary Quizzes	10%
“Mangled Language” Discussion (BONUS 5%)	-
Term Test	20%
Sermon or Commentary Analysis Paper	20%
Exam	20%
Total	100%

NOTE: All assignments must be submitted to the appropriate Assignment Box on Avenue to Learn **in word or PDF format**.

A. Practice Exercises, 30%: (Due on Oct 9, Nov 6, and Nov 27 at 11:59 pm)

Students will complete weekly exercises provided by the instructors that involve the use of material covered in the weekly Greek videos and tutorials. The online workshops will focus in part on discussing and answering questions about these exercises to help you learn; we will work through examples together in tutorial. These exercises will be collected and graded on four separate occasions.

B. Vocabulary Quizzes, 10%: Due weekly

You will be responsible for learning roughly 150–200 of the most common words in the Greek New Testament, as well as the most common paradigms (the article, verb endings, etc.). You will be required to give an English gloss for each. Vocabulary will be quizzed *weekly* on A2L (this will *not* require typing in Greek).

C. “Mangled Language” Discussion, 5%: “Due” weekly in our synchronous meeting.

Each week a question will be posted in a discussion on A2L. It will deal with a debatable interpretation of a biblical text involving the use of language. Students who read and respond with a thoughtful comment (either on A2L or in class) will earn up to a 5% bonus mark in the course.

D. Term Test, 15%: Week of October 17

A term test will be scheduled during the week of October 17–21. This will be conducted with either the Respondus browser or a live video (Zoom) meeting with the students and the proctor (the instructors). More information will be given in class.

E. Sermon/Commentary Analysis, 20%: Due on Sunday, Dec 3 by 11:59 PM

Evaluate and critique a sermon, article, or an excerpt of a commentary (which will be provided by the instructors) in terms of the handling of the original Greek language. Students should utilize what they learn in class and identify the common exegetical and linguistic fallacies (which will be covered in language theory lectures). The entire report should be **6–8 pages** (*no more*) and must follow the MDC style guide.

F. Final Exam, 20%: Week of December 5; (information will be given in class).

There will be a final exam during the week of Dec 5. Like the term test, the final exam will be conducted with proctoring software or a live video meeting.

VI. COURSE SCHEDULE

	Week	Mangled Language ¹	Language Theory	Practical Language	Paradigm
1	Sep 12–16	Course Introduction and Syllabus		Alphabet, Vowels, Pronunciation: Names, Forms, Sounds.	--
2	Sep 19–23	“Loving God”	Functions of Language	Auxiliary System: Particles, Conjunctions, and Prepositions	Alphabet, Pronunciation and Vowels
3	Sep 26–30	“How many kinds of love?”	Form and Function; Syntax and Semantics	Nominal Systems 1: Case, gender, number	The Greek Article
4	Oct 3–7 Exercise Due Oct 9	“Righteousness of God”	Words and Theology	Nominal Systems 2: Noun and pronouns	1 and 2 Declension Nouns
5	Oct 10–14	“Divine Necessity?”	How to do word study?	Nominal Systems 3: Nominal Group	Greek Adjectives
6	Oct 17–21 Term Test	Term Test Review		Introduction to Verb	The Verbal System

¹ These are short (15–20 min) videos dealing with misinterpretations. An opportunity for bonus marks.

7	Oct 24–28	Intensive Hybrid Week			
8	Oct 31–Nov 4 Exercise Due Nov 6	Word Study 101	Exegetical Fallacies 1	Verbal Systems 1: Finite and Non-finite	The Verbal System
9	Nov 7–11	TBD	Exegetical Fallacies 2	Verbal Systems 2: Voice	Primary Active endings
10	Nov 14–18	“Stay-at-home Dad?”	Meaning, Choice, and Ranks	Verbal Systems 3: Tense and Aspect	Primary M/P endings
11	Nov 21–25 Exercise Due Nov 27	“Mirror Reading”	Punctuation and Interpretation	Verbal Systems 4: Mood	Secondary Active endings
12	Nov 28–Dec 1 LT Paper Due Dec 3	Exam Review		Verbal Systems 5	Secondary M/P endings
13	Dec 5–9	Exercise Due: Exam: Dec 9			

VII. CLASSROOM BEHAVIOUR, ATTENDANCE, AND PARTICIPATION

- a. All thoughtful student participation is welcome. There are no “dumb questions” or “stupid answers.” Students will respect each other’s contributions and respond to one another without ridicule or scorn—even while there may be disagreement.
- b. Students are expected to attend all online classes, be on time for class, and stay for the duration of the class session; the only legitimate reasons to miss class are due to illness or emergency (being late on another assignment does not count as an emergency); please email the instructor to explain if you must miss a class.
- c. **Late policy:** All assignments must be submitted on or before the due date, unless other arrangements are made in advance. A late penalty of **2% per day** will be applied to all assignments submitted after the deadline, unless an extension has been obtained from the instructor prior to the deadline. Assignments cannot be submitted after **Dec 9, 2022** without written permission from the Office of the Registrar (strickpd@mcmaster.ca).

VIII. GENERAL GUIDELINES FOR THE SUBMISSION OF WRITTEN WORK

a. **Style**

All stylistic considerations (including but not limited to questions of formatting, footnotes, and bibliographic references) must conform to the [McMaster Divinity College Style Guidelines for Essays and Theses](#).

b. **Gender-inclusive language**

McMaster Divinity College uses inclusive language for human beings in worship services, student written materials, and all its publications. It is expected that inclusive language will be used in chapel services and all MDC assignments; in reference to biblical texts, you need to respect the integrity of the original expressions of the names of God, but in reference to humans, you will need to follow the language of Bible versions such as the NRSV (1989), NCV (1991), TEV/GNB/GNT (1992), CEV (1995), NLT (1996), TNIV (2005), NIV (2011), CEB (2011), etc.

c. **Academic Honesty**

Academic dishonesty is a serious offence that may include plagiarism, the submission of work that is not one's own or for which previous credit has been obtained, and/or unauthorized collaboration with other students, etc. Academic dishonesty can result failure of an assignment, of the course, a notation on one's academic transcript, and/or suspension or expulsion from the College. Students are responsible for understanding what constitutes academic dishonesty at MDC, regardless of previous institutions or habits; please refer to the Divinity College [Statement on Academic Honesty](#).

IX. DISCLAIMER: This syllabus is the property of the instructor and is prepared with currently-available information; the instructor reserves the right to make changes and revisions up to and including the first day of class, or in unanimous agreement with the students.

Ἐν ἀρχῇ ἦν ὁ λόγος, καὶ ὁ λόγος ἦν πρὸς τὸν θεόν, καὶ θεὸς ἦν ὁ λόγος.
In the beginning was the word, and the word was with God, and the word was God.

Gospel of John, 1.1