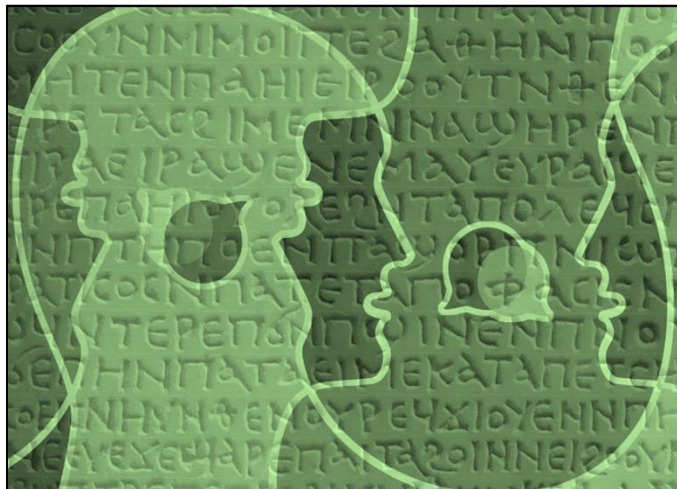




GREEK II: Greek Morphology | NT 2C03

03 July, 2023 – 22 August, 2023



INSTRUCTOR:

Nathan Nadeau, PhD Cand.

Email: nadeaun@mcmaster.ca

Online Asynchronous:

This course is asynchronous: there is no scheduled class meeting.

All course content/assignments will be accessed through [Avenue to Learn](#) (A2L).

Note: *This is an online course.* Students

must have a basic familiarity with computers and navigating webpages in order to participate; this includes the ability to video-conference over *Zoom*, and the ability to upload files to Avenue to Learn.

I. COURSE DESCRIPTION

This course is the second half of a two-term introduction to the Greek of the New Testament (NT). It is intended for students who have taken Greek I (Introduction to Biblical Languages) under the new MDC language curriculum (NT 1B03). Continuing the journey of learning Greek from a functional perspective, we will follow a usage-based pedagogical approach to teaching elementary Greek, in which grammar and vocabulary are introduced according to frequency of usage in the NT, with the most frequent items introduced first. This course assumes that the student has an awareness of the material taught in NT 1B03 and has already learned most of the Greek grammatical categories (e.g., you know what an aorist verb is even if you cannot recognize its various forms).

In this course, students will focus on mastering Greek at the word level. Emphasis will be on acquiring a broad Greek vocabulary and knowledge of morphology (words and their forms) for **sight reading**. We will explore the Greek nominal and verbal systems starting with a review of the most consistent and common forms and paradigms, and then gradually moving on to the less common and less consistent ones. At the end of this course, students should be able to recognize a significant proportion of NT Greek words (and their forms) and hence read a portion of the New Testament in its original language with the help of a lexicon.

A Note of Encouragement: You will find your study this term will challenge you more as we work to absorb and use a larger amount of information (especially towards the end of the term, where you will be surveying a lot of information); that is to be expected. What is important to keep in mind is the goal: each new challenge will bring new rewards of understanding. While “we cannot get into the real forest of the past,”¹ we can traverse space and time to some degree through the doorway of language; the closest you can come to stepping into the world of the New Testament is to understand the language of that world, and of the New Testament. You are already further into that journey than you may realize, and my goal this term is to help you along the way. This will be a positive, empowering, and fruitful experience for you all as a group, and I will work to ensure that everyone moves forward together.

II. LEARNING OUTCOMES



Knowing

- Become familiar with the basic morphology and vocabulary of the Greek New Testament
- Understand verses from the Greek New Testament
- Know the basic concepts needed for the study of the Greek New Testament, and the exegetical methods that aid in the interpretation of individual passages



Being

- Be someone who appreciates the value of understanding the original language and understanding how to use it in ministry
- Be someone who finds pleasure in working with the Greek language in your study of the Bible
- Be someone who has learned how to learn in a group setting, and benefited from working with others in a learning community



Doing

- Be able to proficiently describe the form of a word and its function in a clause
- Be able to read to the Greek New Testament, recognizing all major vocabulary and syntactical features, with the aid of a lexicon

¹ C. S. Lewis, from his inaugural lecture for the Chair of Mediaeval and Renaissance Literature at Cambridge University, 1954.

III. COURSE REQUIREMENTS: TEXTS AND RESOURCES

1. **Textbook (presupposed):** Porter, Stanley E., Jeffrey T. Reed, and Matthew Brook O'Donnell. *Fundamentals of New Testament Greek*. Grand Rapids, MI: Eerdmans, 2010. "FNTG" below. *We will not work sequentially through this book per se, but it will be your major reference tool for everything you have learned.*
2. **Greek New Testament:** you should acquire a standard edition of the Greek New Testament, such as the Nestle-Aland (26th, 27th, or 28th edition is fine), a United Bible Society GNT (3rd, 4th, or 5th), or the Westcott-Hort Greek New Testament.
3. **Materials: Assignments, Handouts, Lesson Slideshows:** As with the previous term, videos, practice exercise, tutorials, presentations, and handouts will all be posted weekly on Avenue to Learn.
4. **Additional Resources:** throughout the term, as interest or need arises, I will share helpful resources for memorization, and reading comprehension, to aid in your abilities.

Textbook Purchase: Required textbooks are available from READ ON Books, located in the Hurlburt Family Bookstore off of Cullen Hall. For advance purchase, orders can be placed by phone (416.620.2934), text (416.668.3434), or email (books@readon.ca), with payment by e-transfer, credit card, or cheque; shipping is free for students.

Interaction with the Instructor:

The instructor will be available via email, Zoom, and the discussion forum on Avenue to Learn. This course is mostly asynchronous (you do things on your own time, week to week) but with one weekly synchronous session (we meet online, live, every Monday). Participation in the weekly synchronous tutorial session is not required this term, but strongly encouraged to facilitate the development of a collaborative learning community and to ensure that all students are keeping up with the quick pace of this summer intensive course.

IV. COURSE REQUIREMENTS: ASSIGNMENTS AND GRADING

Learning Modules	40%
Vocabulary	10%
Long Tests (2)	20%
Final Exam	30%
Total	100%

NOTE: All assignments must be submitted to the appropriate Assignment Box on Avenue to Learn **in PDF format only.**

A. Learning Modules 40%

Students are expected to be actively participating in the online class activities. Class activities are grouped by learning modules. Each module includes video lecture(s), video tutorial(s), “handouts,” and practice exercises. **Note that since there are 10 learning modules and this is an intensive course, some weeks require us to cover two modules in one week.** These are noted on the course schedule below. On these weeks, students will submit *two or more sets* of Practice Exercises (one for each module).

Weekly Synchronous Sessions: weekly synchronous (Zoom) workshops will be available to clarify concepts, ask questions, and interact with the professor and other students.

Practice exercises are to be submitted electronically to corresponding A2L submission folders. No hard copy or scan is allowed. These exercises are given to help you master the material covered in the lesson and to prepare you for the quizzes and tests. Practice exercises will be graded with comments and returned to students. If necessary, I may set up extra appointments with the group to go over the pertinent material and common mistakes. The video lectures and tutorials are to be watched prior to completing the practice exercises and the quiz. **Exercises are due the Sunday night following the Monday of the beginning of that module, at 11:59 pm.**

B. Vocabulary Quizzes, 10%

One of the goals of this course is to help students to familiarize themselves with the basic (and most common) vocabulary of the Greek New Testament. There will be twenty new words in each module. Counting the 200 words already learned in NT 1B03, students will have been assigned roughly 400+ words by the end of the term. A three-level vocabulary quiz on A2L will help students to learn these words. All students must start at the first level, which contains the 200 words that are covered in NT 1B03. A second level quiz contains 300 words, then a third level contains 400 words. For every quiz attempt, A2L will randomly select 20% of the total number of words from the word pool (i.e. 40 words for the first level, 60 for the second, 80 for the third). There is no limit to the number of quiz attempts allowed, but there will be a time limit (20 mins). **Only your highest attempt will be used to calculate your overall grade.** To complete a level (and if applicable, to advance to the next level), your highest attempt must obtain a grade of 90% or more. Your final grade will depend on which levels you complete: you will get 5% towards your final grade for completing level one, 7.5% for completing levels one and two, and 10% for completing all three levels.

C. Long Tests, 2x10% (20%)

There will be two long tests (10% each, 1.5 hours each). These tests may include sentence translations, grammar explanations, paradigms, parsing, vocabulary, etc. The tests are cumulative. The deadline to take the first long test is Friday, July 21, the end of the Week 3, in which we finish Module 3. The first test covers Modules 1–3. The deadline for the second test is

Friday, August 11, the end of 6. **Failing to take the exams before the deadline will result in a zero grade.**

D. Final Examination Test, 30%

The final exam is three hours long. The last day to take the exam is August 22. Failing to take the exam before this date will result in a zero grade.

Tests and Exams: Each exam will be administered to the student to complete within an allotted time. Exams will be proctored. The student must choose someone to proctor the exam, and this person must be approved by the instructors and Registrar of McMaster Divinity College. Examples of approved proctors are faculty or staff of any accredited seminary, university, or college, or a pastor or staff member of a local church. Alternatively, we can find one or two common timeslots for all students and the instructor will be proctoring the test/exam. A sign-up sheet will be posted 10 days before the test/exam for students to indicate their availability. If a student needs special accommodation due to unforeseeable circumstances, please email the instructor for further details on arranging the exams.

V. COURSE SCHEDULE

Wk. of / module	Topics	Grammatical Categories	Ref chs. in FNTG
Jul 3 Module 1	Nominal System I	Contraction rules; 3 rd -declension nouns; 1/3 adjectives, 3 adjectives; pronouns: indefinite/interrogative pronouns	1, 7
Jul 10 Module 2	Nominal System II	Participle (Aorist, Present, Future) – Active, M/P, M; Proper nouns	10, 17
Jul 17* Module 3	The Auxiliary	Negative particles, conjunctions, adverbs; comparative/superlative adjectives; relative pronouns	4, 5, 9, 16, 19
Jul 24 Module 4	Verbal System I	Contraction rules; indicative verb variations (contract, liquid, stops)	8, 16, 23
Jul 31 Module 5	Verbal System II	Infinitives; Aorist/Future Passive; personal and intensive pronouns	4, 8, 11, 13, 15, 20, 22
Aug 7** Mods 6/7	Verbal System III/IV	Subjunctive mood; reflective and reciprocal pronouns; imperative and optative moods	14, 23, 24, 30
Aug 14 Mods 8-10	Verbal System V/VI	Perfect and Pluperfect; athematic verbs (-μι verbs); periphrastic/catenative constructions; clause types; conditionals	10, 12, 14, 18, 21, 25-30
Aug 21	Final Exam	Finish last assignments; review for final exam	

*Long Test 1 due by July 21 @ 11:30 PM

**Long Test 2 due by August 11 @ 11:30 PM

VI. COURSE PREPARATION

To better prepare for this course, students are expected to review everything (practical language) covered in NT 1B03 (Spring 2021). An extra module (module zero) is added to the A2L course shell to provide a review of the material covered in that class. This module is not required and does not factor into the course grade but will provide an overview review prior to our first week

of this course. Students are expected to have already memorized roughly 200 most common Greek words (from last term). Students should also be able to recognize the following endings and paradigms (with the corresponding chapters of FNTG in square brackets):

- Nominal System:
 - First and second declension endings [2; 5]
 - The article paradigm [3]
 - 2-1-2 adjective endings [2]
 - Verbless clauses and lexical structures [3]
- Verbal System:
 - Primary and secondary endings (Active and M/P)
 - Formations of the indicative mood: Aorist (first and second) [4, 6, 11], Future [8, 11], Present [8, 13], and Imperfect [6, 13]
 - The paradigm of εἶμι [7.5, 8.4.2]
- Auxiliary:
 - Preposition with one case [12]
 - Preposition with two or three cases [15]
 - Conjunctions and particles
- Phonology:
 - Vowel lengthening and compensation [1.3.7.3]
 - Vowel contraction [1.3.7.4]

VII. POLICY ON LATE WORK

In an online course, there is some flexibility in when students complete assignments and quizzes, but they must be completed by a deadline during the week assigned. It is essential in a language course not to fall behind in the material. Marks will be deducted for late assignments or quizzes if there is no valid reason, such as major illness or a family crisis. **The deduction will be 3% per day.** If you have a valid reason to request an extension, email me at nadeaun@mcmaster.ca before the due date. **Note** that the weekly Quiz and Practice Exercises are due Friday night of the week that we cover that module's material. The Vocabulary component is completed on your own schedule by the day/time of the final exam. ****The instructor cannot give an extension on any assignment past August 26 without the student formally requesting an Incomplete and receiving approval from the Registrar****

VIII. GENERAL GUIDELINES FOR THE SUBMISSION OF WRITTEN WORK

a. Style

All stylistic considerations (including but not limited to questions of formatting, footnotes, and bibliographic references) must conform to the [McMaster Divinity](#)

[College Style Guidelines for Essays and Theses](#). Failure to observe appropriate form (for example, on your term paper) will result in grade deductions.

b. Gender-inclusive language

McMaster Divinity College uses inclusive language for human beings in worship services, student written materials, and all its publications. It is expected that inclusive language will be used in chapel services and all MDC assignments; in reference to biblical texts, you need to respect the integrity of the original expressions of the names of God, but in reference to humans, you will need to follow the language of Bible versions such as the NRSV (1989), NCV (1991), TEV/GNB/GNT (1992), CEV (1995), NLT (1996), TNIV (2005), NIV (2011), and the Common English Bible (CEB 2011).

c. Academic Honesty

Academic dishonesty is a serious offence that may take any number of forms, including plagiarism, the submission of work that is not one's own or for which previous credit has been obtained, and/or unauthorized collaboration with other students. Academic dishonesty can result in severe consequences, e.g., failure of the assignment, failure of the course, a notation on one's academic transcript, and/or suspension or expulsion from the College. Students are responsible for understanding what constitutes academic dishonesty at McMaster Divinity College, regardless of previous institutions or habits; please refer to the Divinity College [Statement on Academic Honesty](#).

IX. DISCLAIMER

This syllabus is the property of the instructor and is prepared with currently-available information; the instructor reserves the right to make changes and revisions up to and including the first day of class, or in unanimous agreement with the students.

Ἐν ἀρχῇ ἦν ὁ λόγος, καὶ ὁ λόγος ἦν πρὸς τὸν θεόν, καὶ θεὸς ἦν ὁ λόγος.

“In the beginning was the word, and the word was with God, and the word was God.”

John 1:1